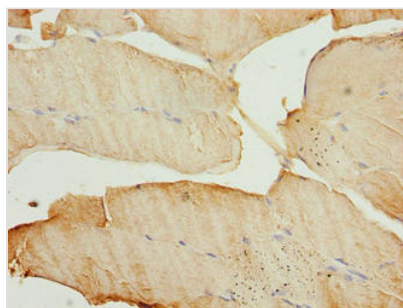




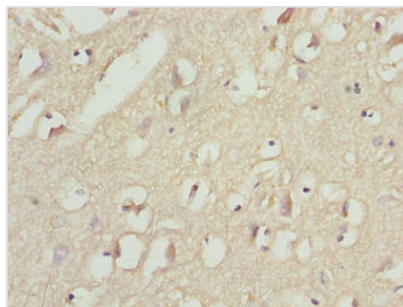
# MAP1LC3A Antibody

<b>Product Code</b>	CSB-PA880971DA01HU
<b>Storage</b>	Upon receipt, store at -20°C or -80°C. Avoid repeated freeze.
<b>Uniprot No.</b>	Q9H492
<b>Immunogen</b>	Recombinant Human Microtubule-associated proteins 1A/1B light chain 3A protein (1-120AA)
<b>Raised In</b>	Rabbit
<b>Species Reactivity</b>	Human
<b>Tested Applications</b>	ELISA, IHC; Recommended dilution: IHC:1:20-1:200
<b>Form</b>	Liquid
<b>Conjugate</b>	Non-conjugated
<b>Storage Buffer</b>	Preservative: 0.03% Proclin 300 Constituents: 50% Glycerol, 0.01M PBS, PH 7.4
<b>Purification Method</b>	>95%, Protein G purified
<b>Isotype</b>	IgG
<b>Clonality</b>	Polyclonal
<b>Alias</b>	Microtubule-associated proteins 1A/1B light chain 3A (Autophagy-related protein LC3 A) (Autophagy-related ubiquitin-like modifier LC3 A) (MAP1 light chain 3-like protein 1) (MAP1A/MAP1B light chain 3 A) (MAP1A/MAP1B LC3 A) (Microtubule-associated protein 1 light chain 3 alpha), MAP1LC3A
<b>Immunogen Species</b>	Homo sapiens (Human)
<b>Research Area</b>	Signal Transduction
<b>Target Names</b>	MAP1LC3A

## Image



Immunohistochemistry of paraffin-embedded human skeletal muscle tissue using CSB-PA880971DA01HU at dilution of 1:100



Immunohistochemistry of paraffin-embedded human brain tissue using CSB-PA880971DA01HU at dilution of 1:100