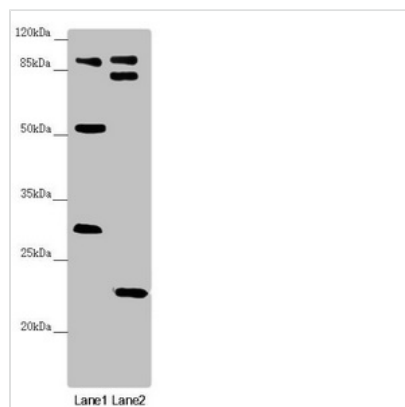




# KANSL3 Antibody

<b>Product Code</b>	CSB-PA882183ESR2HU
<b>Storage</b>	Upon receipt, store at -20°C or -80°C. Avoid repeated freeze.
<b>Uniprot No.</b>	Q9P2N6
<b>Immunogen</b>	Recombinant Human KAT8 regulatory NSL complex subunit 3 protein (1-200AA)
<b>Raised In</b>	Rabbit
<b>Species Reactivity</b>	Human, Mouse
<b>Tested Applications</b>	ELISA, WB, IHC; Recommended dilution: WB:1:1000-1:5000, IHC:1:20-1:200
<b>Form</b>	Liquid
<b>Conjugate</b>	Non-conjugated
<b>Storage Buffer</b>	PBS with 0.02% sodium azide, 50% glycerol, pH7.3.
<b>Purification Method</b>	Antigen Affinity Purified
<b>Isotype</b>	IgG
<b>Clonality</b>	Polyclonal
<b>Alias</b>	KAT8 regulatory NSL complex subunit 3 (NSL complex protein NSL3) (Non-specific lethal 3 homolog) (Serum inhibited-related protein) (Testis development protein PRTD), KANSL3, KIAA1310 NSL3 PRTD SI1
<b>Immunogen Species</b>	Homo sapiens (Human)
<b>Research Area</b>	Cell Biology
<b>Target Names</b>	KANSL3

## Image



### Western blot

All lanes: KANSL3 antibody at 1.68 µg/ml

Lane 1: U251 whole cell lysate

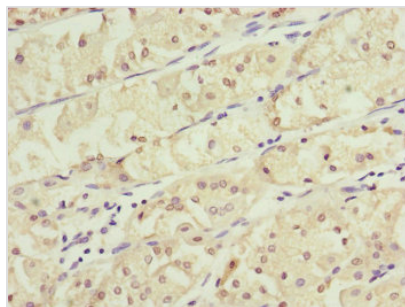
Lane 2: Mouse small intestine tissue

### Secondary

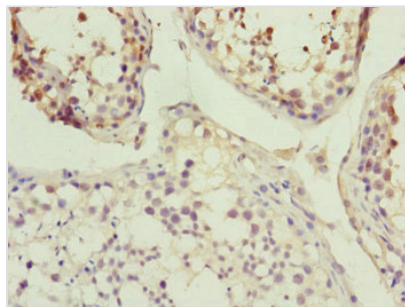
Goat polyclonal to rabbit IgG at 1/10000 dilution

Predicted band size: 96, 84, 94, 81, 17, 59 kDa

Observed band size: 96, 83, 53, 31, 23 kDa



Immunohistochemistry of paraffin-embedded human gastric cancer using CSB-PA882183ESR2HU at dilution of 1:100



Immunohistochemistry of paraffin-embedded human testis tissue using CSB-PA882183ESR2HU at dilution of 1:100