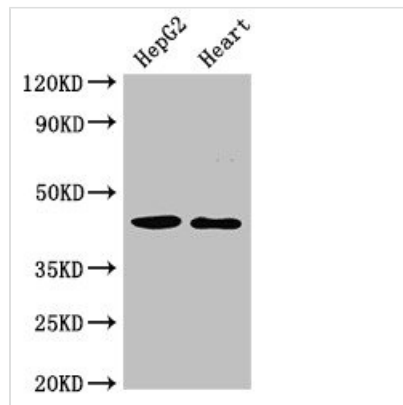




GULP1 Antibody

Product Code	CSB-PA887007LA01HU
Storage	Upon receipt, store at -20°C or -80°C. Avoid repeated freeze.
Uniprot No.	Q9UBP9
Immunogen	Recombinant Human PTB domain-containing engulfment adapter protein 1 protein (199-279AA)
Raised In	Rabbit
Species Reactivity	Human, Rat
Tested Applications	ELISA, WB, IF; Recommended dilution: WB:1:500-1:5000, IF:1:50-1:200
Form	Liquid
Conjugate	Non-conjugated
Storage Buffer	Preservative: 0.03% Proclin 300 Constituents: 50% Glycerol, 0.01M PBS, pH 7.4
Purification Method	>95%, Protein G purified
Isotype	IgG
Clonality	Polyclonal
Alias	PTB domain-containing engulfment adapter protein 1 (Cell death protein 6 homolog) (PTB domain adapter protein CED-6) (Protein GULP), GULP1, CED6 GULP
Immunogen Species	Homo sapiens (Human)
Research Area	Signal Transduction
Target Names	GULP1

Image



Western Blot

Positive WB detected in: HepG2 whole cell lysate, Rat heart tissue

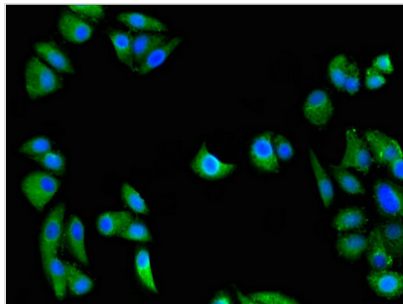
All lanes: GULP1 antibody at 2µg/ml

Secondary

Goat polyclonal to rabbit IgG at 1/50000 dilution

Predicted band size: 35, 20, 23, 34 kDa

Observed band size: 45 kDa



Immunofluorescent analysis of HepG2 cells using CSB-PA887007LA01HU at dilution of 1:100 and Alexa Fluor 488-conjugated AffiniPure Goat Anti-Rabbit IgG(H+L)