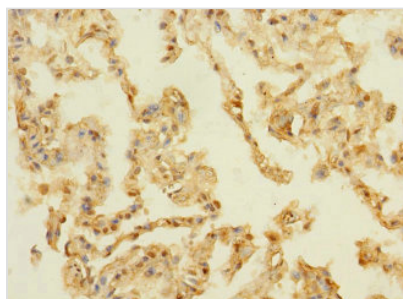




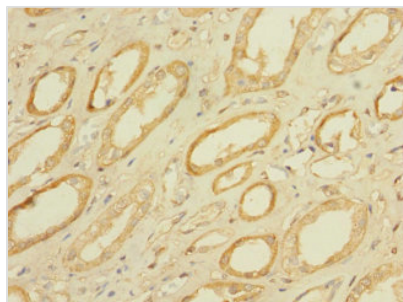
# PAQR5 Antibody

<b>Product Code</b>	CSB-PA889141LA01HU
<b>Storage</b>	Upon receipt, store at -20°C or -80°C. Avoid repeated freeze.
<b>Uniprot No.</b>	Q9NXK6
<b>Immunogen</b>	Recombinant Human Membrane progesterin receptor gamma protein (1-51AA)
<b>Raised In</b>	Rabbit
<b>Species Reactivity</b>	Human
<b>Tested Applications</b>	ELISA, WB, IHC, IF; Recommended dilution: WB:1:500-1:5000, IHC:1:20-1:200, IF:1:50-1:200
<b>Form</b>	Liquid
<b>Conjugate</b>	Non-conjugated
<b>Storage Buffer</b>	Preservative: 0.03% Proclin 300 Constituents: 50% Glycerol, 0.01M PBS, PH 7.4
<b>Purification Method</b>	>95%, Protein G purified
<b>Isotype</b>	IgG
<b>Clonality</b>	Polyclonal
<b>Alias</b>	Membrane progesterin receptor gamma (mPR gamma) (Membrane progesterone P4 receptor gamma) (Membrane progesterone receptor gamma) (Progesterone and adipoQ receptor family member 5) (Progesterin and adipoQ receptor family member 5) (Progesterin and adipoQ receptor family member V), PAQR5, MPRG
<b>Immunogen Species</b>	Homo sapiens (Human)
<b>Research Area</b>	Signal Transduction
<b>Target Names</b>	PAQR5

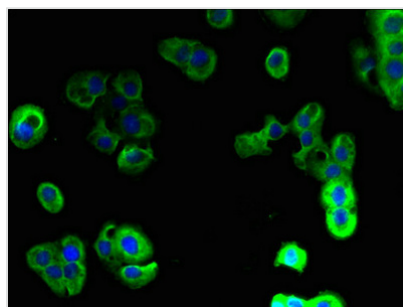
## Image



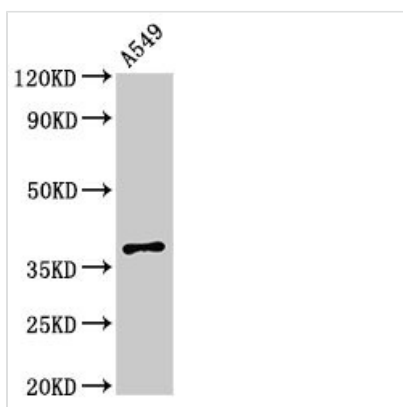
Immunohistochemistry of paraffin-embedded human lung tissue using CSB-PA889141LA01HU at dilution of 1:100



Immunohistochemistry of paraffin-embedded human kidney tissue using CSB-PA889141LA01HU at dilution of 1:100



Immunofluorescent analysis of A431 cells using CSB-PA889141LA01HU at dilution of 1:100 and Alexa Fluor 488-conjugated AffiniPure Goat Anti-Rabbit IgG(H+L)



Western Blot

Positive WB detected in: A549 whole cell lysate

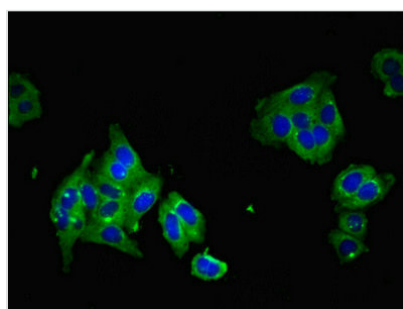
All lanes: PAQR5 antibody at 2.5μg/ml

Secondary

Goat polyclonal to rabbit IgG at 1/50000 dilution

Predicted band size: 39 kDa

Observed band size: 39 kDa



Immunofluorescent analysis of HepG2 cells using CSB-PA889141LA01HU at dilution of 1:100 and Alexa Fluor 488-conjugated AffiniPure Goat Anti-Rabbit IgG(H+L)