



IMPACT Antibody

| | |
|----------------------------|--|
| Product Code | CSB-PA889191LA01HU |
| Storage | Upon receipt, store at -20°C or -80°C. Avoid repeated freeze. |
| Uniprot No. | Q9P2X3 |
| Immunogen | Recombinant Human Protein IMPACT protein (41-320AA) |
| Raised In | Rabbit |
| Species Reactivity | Human |
| Tested Applications | ELISA, WB, IHC; Recommended dilution: WB:1:1000-1:5000, IHC:1:20-1:200 |
| Form | Liquid |
| Conjugate | Non-conjugated |
| Storage Buffer | Preservative: 0.03% Proclin 300 Constituents: 50% Glycerol, 0.01M PBS, PH 7.4 |
| Purification Method | >95%, Protein G purified |
| Isotype | IgG |
| Clonality | Polyclonal |
| Alias | Protein IMPACT (Imprinted and ancient gene protein homolog), IMPACT |
| Immunogen Species | Homo sapiens (Human) |
| Research Area | Epigenetics and Nuclear Signaling |
| Target Names | IMPACT |

Image



Western blot

All lanes: IMPACT antibody at 10µg/ml

Lane 1: Hela whole cell lysate

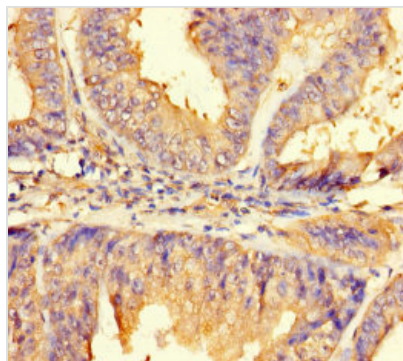
Lane 2: HL60 whole cell lysate

Secondary

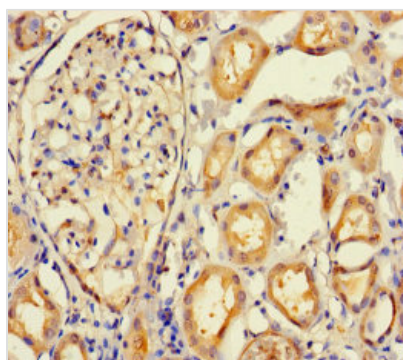
Goat polyclonal to rabbit IgG at 1/10000 dilution

Predicted band size: 37, 23 kDa

Observed band size: 37, 52 kDa



Immunohistochemistry of paraffin-embedded human endometrial cancer using CSB-PA889191LA01HU at dilution of 1:100



Immunohistochemistry of paraffin-embedded human kidney tissue using CSB-PA889191LA01HU at dilution of 1:100