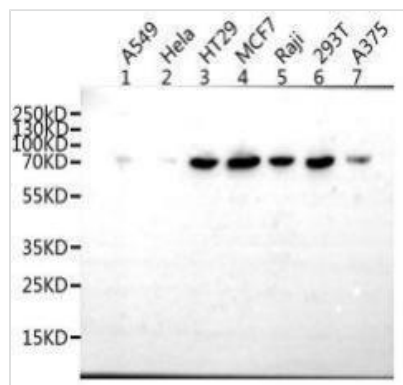




# LAMP3 Antibody

<b>Product Code</b>	CSB-PA892177LA01HU
<b>Storage</b>	Upon receipt, store at -20°C or -80°C. Avoid repeated freeze.
<b>Uniprot No.</b>	Q9UQV4
<b>Immunogen</b>	Recombinant Human Lysosome-associated membrane glycoprotein 3 protein (28-224AA)
<b>Raised In</b>	Rabbit
<b>Species Reactivity</b>	Human
<b>Tested Applications</b>	ELISA, WB,IF; Recommended dilution: WB:1:1000-1:5000,IF:1:50-1:500
<b>Form</b>	Liquid
<b>Storage Buffer</b>	PBS with 0.02% sodium azide and 50% glycerol pH 7.3.
<b>Purification Method</b>	Antigen affinity purification
<b>Isotype</b>	IgG
<b>Clonality</b>	Polyclonal
<b>Product Type</b>	Polyclonal Antibody
<b>Immunogen Species</b>	Homo sapiens (Human)
<b>Research Area</b>	Tags & Cell Markers
<b>Target Names</b>	LAMP3

## Image

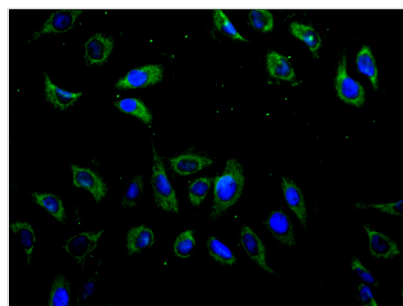


Western Blot Positive WB detected in: A549 whole cell lysate, Hela whole cell lysate, HT29 whole cell lysate, MCF-7 whole cell lysate, Raji whole cell lysate, 293T whole cell lysate, A375 whole cell lysate

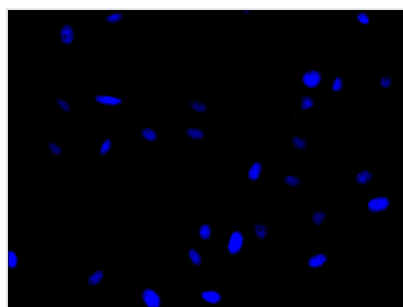
All lanes: LAMP3 antibody at 1/1000 dilution  
Secondary Goat polyclonal to rabbit IgG at 1/50000 dilution

Predicted band size: 45 kDa

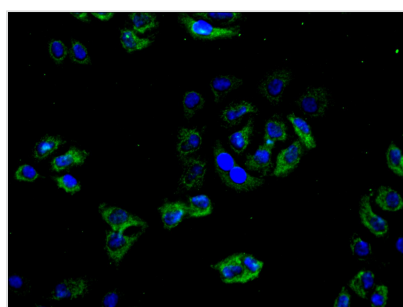
Observed band size: 70 kDa



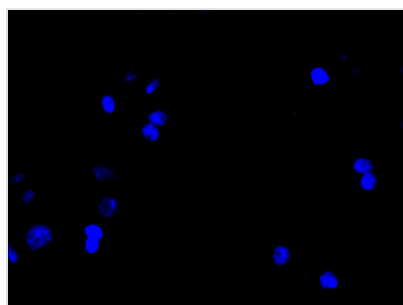
Immunofluorescence staining of A549 cell with CSB-PA892177LA01HU at 1:100, counter-stained with DAPI. The cells were fixed in 4% formaldehyde and blocked in 10% normal Goat Serum. The cells were then incubated with the antibody overnight at 4°C. The secondary antibody was Alexa Fluor 488-conjugated AffiniPure Goat Anti-Rabbit IgG(H+L).



Immunofluorescence staining of A549 cell with 5% goat serum, counter-stained with DAPI. The cells were fixed in 4% formaldehyde and blocked in 10% normal Goat Serum. The cells were then incubated with the antibody overnight at 4C. The secondary antibody was Alexa Fluor 488-conjugated AffiniPure Goat Anti-Rabbit IgG(H+L).



Immunofluorescence staining of HeLa cell with CSB-PA892177LA01HU at 1:100, counter-stained with DAPI. The cells were fixed in 4% formaldehyde and blocked in 10% normal Goat Serum. The cells were then incubated with the antibody overnight at 4C. The secondary antibody was Alexa Fluor 488-conjugated AffiniPure Goat Anti-Rabbit IgG(H+L).



Immunofluorescence staining of HeLa cell with 5% goat serum, counter-stained with DAPI. The cells were fixed in 4% formaldehyde and blocked in 10% normal Goat Serum. The cells were then incubated with the antibody overnight at 4C. The secondary antibody was Alexa Fluor 488-conjugated AffiniPure Goat Anti-Rabbit IgG(H+L).