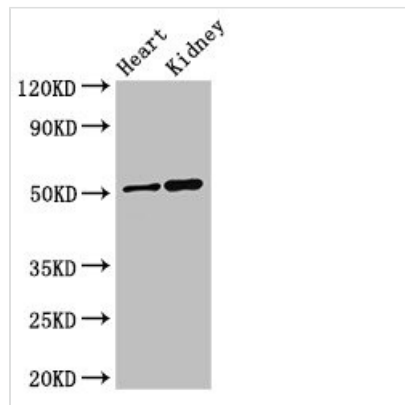




SIGLEC7 Antibody

Product Code	CSB-PA896485LA01HU
Storage	Upon receipt, store at -20°C or -80°C. Avoid repeated freeze.
Uniprot No.	Q9Y286
Immunogen	Recombinant Human Sialic acid-binding Ig-like lectin 7 protein (377-467AA)
Raised In	Rabbit
Species Reactivity	Human, Mouse
Tested Applications	ELISA, WB, IHC, IF; Recommended dilution: WB:1:500-1:5000, IHC:1:20-1:200, IF:1:50-1:200
Form	Liquid
Conjugate	Non-conjugated
Storage Buffer	Preservative: 0.03% Proclin 300 Constituents: 50% Glycerol, 0.01M PBS, pH 7.4
Purification Method	>95%, Protein G purified
Isotype	IgG
Clonality	Polyclonal
Alias	Sialic acid-binding Ig-like lectin 7 (Siglec-7) (Adhesion inhibitory receptor molecule 1) (AIRM-1) (CDw328) (D-siglec) (QA79 membrane protein) (p75) (CD antigen CD328), SIGLEC7, AIRM1
Immunogen Species	Homo sapiens (Human)
Research Area	Cardiovascular
Target Names	SIGLEC7

Image



Western Blot

Positive WB detected in: Mouse heart tissue,
Mouse kidney tissue

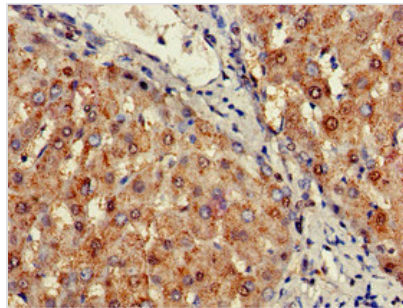
All lanes: SIGLEC7 antibody at 3μg/ml

Secondary

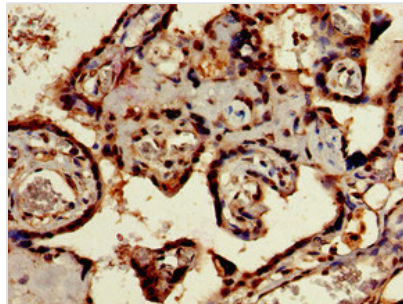
Goat polyclonal to rabbit IgG at 1/50000 dilution

Predicted band size: 52, 42, 17 kDa

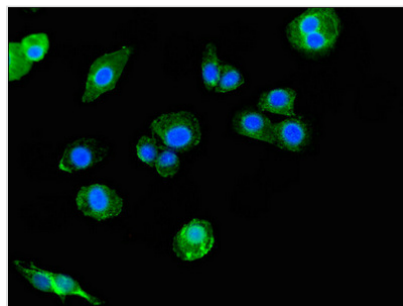
Observed band size: 52 kDa



Immunohistochemistry of paraffin-embedded human liver tissue using CSB-PA896485LA01HU at dilution of 1:100



Immunohistochemistry of paraffin-embedded human placenta tissue using CSB-PA896485LA01HU at dilution of 1:100



Immunofluorescent analysis of HepG2 cells using CSB-PA896485LA01HU at dilution of 1:100 and Alexa Fluor 488-conjugated AffiniPure Goat Anti-Rabbit IgG(H+L)