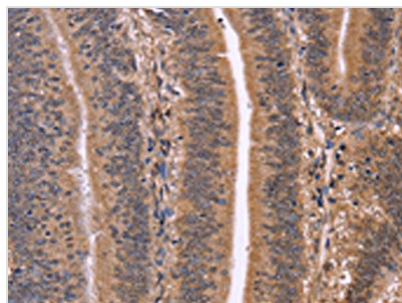




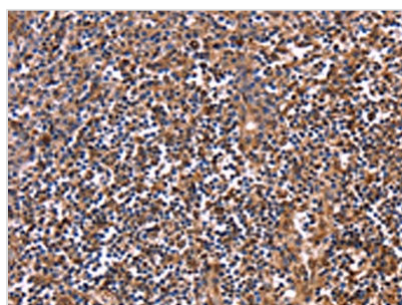
# CLUAP1 Antibody

|                            |  |
|----------------------------|--|
| <b>Product Code</b>        | CSB-PA911084   |
| <b>Storage</b>             | Upon receipt, store at -20°C or -80°C. Avoid repeated freeze.    |
| <b>Uniprot No.</b>         | Q96AJ1   |
| <b>Immunogen</b>           | Fusion protein of Human CLUAP1                                   |
| <b>Raised In</b>           | Rabbit   |
| <b>Species Reactivity</b>  | Human,Mouse,Rat  |
| <b>Tested Applications</b> | ELISA,WB,IHC;ELISA:1:2000-1:5000,WB:1:500-1:2000,IHC:1:100-1:300 |
| <b>Form</b>                | Liquid   |
| <b>Conjugate</b>           | Non-conjugated   |
| <b>Storage Buffer</b>      | -20°C, pH7.4 PBS, 0.05% NaN <sub>3</sub> , 40% Glycerol          |
| <b>Purification Method</b> | Antigen affinity purification                                    |
| <b>Isotype</b>             | IgG  |
| <b>Immunogen Species</b>   | Homo sapiens (Human)   |
| <b>Target Names</b>        | CLUAP1   |

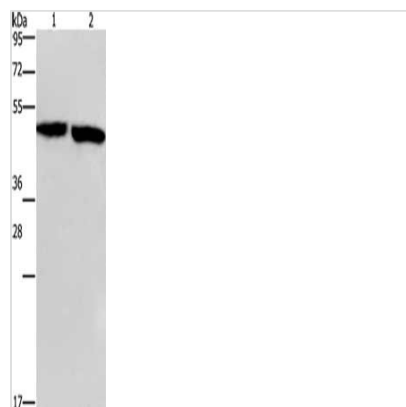
## Image



The image on the left is immunohistochemistry of paraffin-embedded Human colon cancer tissue using CSB-PA911084(CLUAP1 Antibody) at dilution 1/50, on the right is treated with fusion protein. (Original magnification: ×200)



The image on the left is immunohistochemistry of paraffin-embedded Human tonsil tissue using CSB-PA911084(CLUAP1 Antibody) at dilution 1/50, on the right is treated with fusion protein. (Original magnification: ×200)



Gel: 8%SDS-PAGE, Lysate: 40  $\mu$ g, Lane 1-2:  
 Mouse stomach tissue, Mouse brain tissue,  
 Primary antibody: CSB-PA911084(CLUAP1  
 Antibody) at dilution 1/500, Secondary antibody:  
 Goat anti rabbit IgG at 1/8000 dilution, Exposure  
 time: 1 minute