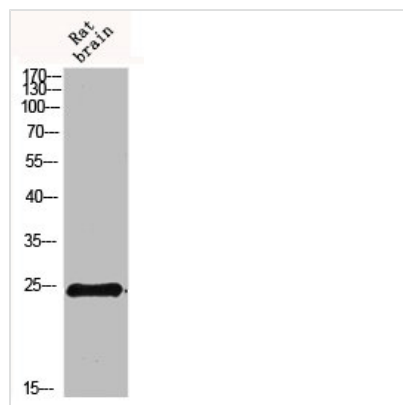




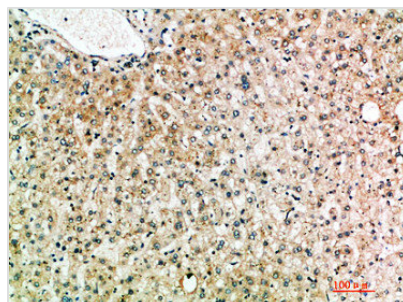
# IL19 Antibody

<b>Product Code</b>	CSB-PA942523
<b>Storage</b>	Upon receipt, store at -20°C or -80°C. Avoid repeated freeze.
<b>Uniprot No.</b>	Q9UHD0
<b>Immunogen</b>	Synthetic peptide from Human protein at AA range: 51-100
<b>Raised In</b>	Rabbit
<b>Species Reactivity</b>	Human,Rat
<b>Tested Applications</b>	WB, IHC, ELISA; WB:1:500-1:2000, IHC:1:100-1:300, ELISA:1:20000,
<b>Form</b>	Liquid
<b>Conjugate</b>	Non-conjugated
<b>Storage Buffer</b>	PBS, pH 7.4, containing 0.02% sodium azide as Preservative and 50% Glycerol.
<b>Purification Method</b>	The antibody was affinity-purified from rabbit serum by affinity-chromatography using specific immunogen.
<b>Alias</b>	Interleukin-19 (IL-19) (Melanoma differentiation-associated protein-like protein) (NG.1)
<b>Immunogen Species</b>	Homo sapiens (Human)
<b>Target Names</b>	IL19

## Image



Western blot analysis of 293T Hela VEC KB mouse-kidney lysate, antibody was diluted at 500. Secondary antibody was diluted at 1:20000



Immunohistochemical analysis of paraffin-embedded human-liver, antibody was diluted at 1:200