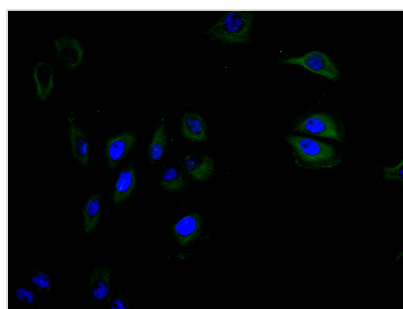




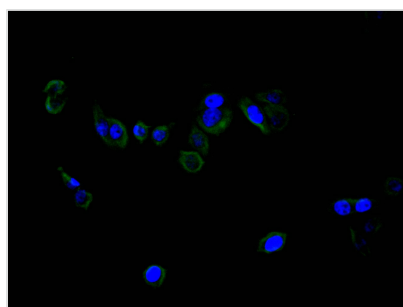
CD40 Recombinant Monoclonal Antibody

Product Code	CSB-RA004936MA1HU
Storage	Upon receipt, store at -20°C or -80°C. Avoid repeated freeze.
Uniprot No.	P25942
Immunogen	Recombinant Human CD40 protein
Species Reactivity	Human
Tested Applications	ELISA, IF, FC; Recommended dilution: IF:1:20-1:200, FC:1:20-1:200
Form	Liquid
Conjugate	Non-conjugated
Storage Buffer	Preservative: 0.03% Proclin 300 Constituents: 50% Glycerol, 0.01M PBS, PH 7.4
Purification Method	Affinity-chromatography
Isotype	Mouse IgG
Clonality	Monoclonal
Product Type	Recombinant Antibody
Immunogen Species	Homo sapiens (Human)
Research Area	Cardiovascular;Immunology;Stem cells
Gene Names	CD40
Clone No.	10A12

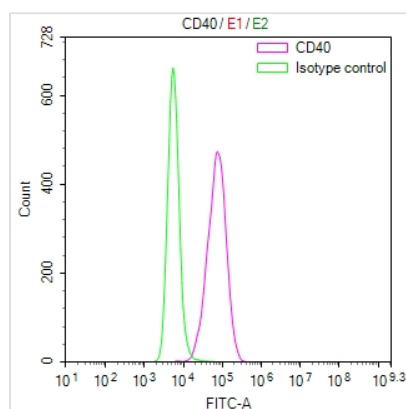
Image



Immunofluorescence staining of A549 cell with CSB-RA004936MA1HU at 1:30, counter-stained with DAPI. The cells were fixed in 4% formaldehyde and blocked in 10% normal Goat Serum. The cells were then incubated with the antibody overnight at 4C. The secondary antibody was FITC-conjugated AffiniPure Goat Anti-mouse IgG(H+L).



Immunofluorescence staining of PC-3 cell with CSB-RA004936MA1HU at 1:30, counter-stained with DAPI. The cells were fixed in 4% formaldehyde and blocked in 10% normal Goat Serum. The cells were then incubated with the antibody overnight at 4C. The secondary antibody was FITC-conjugated AffiniPure Goat Anti-mouse IgG(H+L).



Overlay Peak curve showing THP-1 cells surface stained with CSB-RA004936MA1HU (red line) at 1:100. Then 10% normal goat serum to block non-specific protein-protein interactions followed by the antibody ($1\mu\text{g}/1 \times 10^6$ cells) for 45min at 4°. The secondary antibody used was FITC-conjugated Goat Anti-Mouse IgG(H+L) at 1/200 dilution for 35 min at 4°C. Isotype control antibody (green line) was mouse IgG1 ($1\mu\text{g}/1 \times 10^6$ cells) used under the same conditions. Acquisition of >10,012 events was performed.