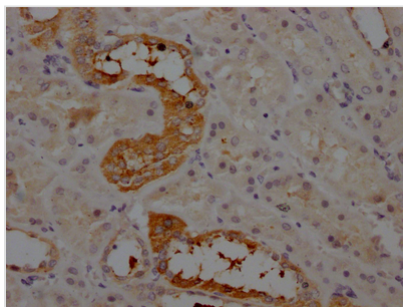




# AGT Recombinant Monoclonal Antibody

<b>Product Code</b>	CSB-RA263831A0HU
<b>Storage</b>	Upon receipt, store at -20°C or -80°C. Avoid repeated freeze.
<b>Uniprot No.</b>	P01019
<b>Immunogen</b>	A synthesized peptide derived from human Angiotensinogen
<b>Species Reactivity</b>	Human
<b>Tested Applications</b>	ELISA, IHC; Recommended dilution: IHC:1:50-1:200
<b>Relevance</b>	Essential component of the renin-angiotensin system (RAS), a potent regulator of blood pressure, body fluid and electrolyte homeostasis.
<b>Form</b>	Liquid
<b>Conjugate</b>	Non-conjugated
<b>Storage Buffer</b>	Rabbit IgG in phosphate buffered saline, pH 7.4, 150mM NaCl, 0.02% sodium azide and 50% glycerol.
<b>Purification Method</b>	Affinity-chromatography
<b>Isotype</b>	Rabbit IgG
<b>Clonality</b>	Monoclonal
<b>Product Type</b>	Recombinant Antibody
<b>Immunogen Species</b>	Homo sapiens (Human)
<b>Research Area</b>	Cardiovascular; Metabolism; Signal transduction
<b>Gene Names</b>	AGT
<b>Clone No.</b>	8A9

## Image



IHC image of CSB-RA263831A0HU diluted at 1:100 and staining in paraffin-embedded human kidney tissue performed on a Leica Bond<sup>TM</sup> system. After dewaxing and hydration, antigen retrieval was mediated by high pressure in a citrate buffer (pH 6.0). Section was blocked with 10% normal goat serum 30min at RT. Then primary antibody (1% BSA) was incubated at 4? overnight. The primary is detected by a Goat anti-rabbit IgG polymer labeled by HRP and visualized using 0.05% DAB.

## Description

The AGT recombinant monoclonal antibody is produced using protein and DNA recombinant technology. Mice are first immunized with a synthetic peptide derived from human AGT. After a certain period, the spleen of the mice is removed aseptically, and total RNA is extracted from the spleen cells. The RNA is then reversely transcribed into cDNA, which serves as a template for PCR amplification of the AGT antibody gene. The resulting gene is inserted into a



vector and transfected into host cells for culture. The AGT recombinant monoclonal antibody is purified from the cell culture supernatant by affinity chromatography. It is thoroughly verified and can be used for human AGT protein detection in ELISA and IHC experiments.

AGT is a protein that is produced by the liver and secreted into the bloodstream. It plays a crucial role in the renin-angiotensin system (RAS), which is responsible for regulating blood pressure, fluid, and electrolyte balance in the body. AGT expression is also regulated by a number of factors, including hormones such as estrogen, insulin, and glucocorticoids, as well as cytokines and growth factors. Dysregulation of AGT expression has been implicated in the pathogenesis of a variety of cardiovascular and renal diseases, including hypertension, heart failure, and chronic kidney disease.