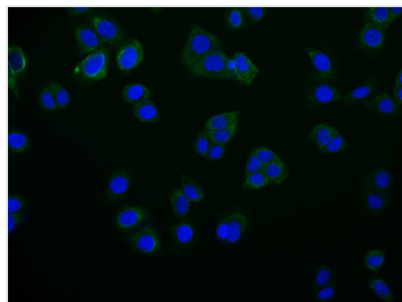




RAB25 Recombinant Monoclonal Antibody

Product Code	CSB-RA284745A0HU
Storage	Upon receipt, store at -20°C or -80°C. Avoid repeated freeze.
Uniprot No.	P57735
Immunogen	A synthesized peptide derived from human RAB25
Species Reactivity	Human
Tested Applications	ELISA, IF; Recommended dilution: IF:1:50-1:200
Relevance	Involved in the regulation of cell survival. Promotes invasive migration of cells in which it functions to localize and maintain integrin alpha-V/beta-1 at the tips of extending pseudopodia (PubMed:17925226). Involved in the regulation of epithelial morphogenesis through the control of CLDN4 expression and localization at tight junctions (By similarity). May selectively regulate the apical recycling pathway. Together with MYO5B regulates transcytosis (By similarity). {ECO:0000250 UniProtKB:E2RQ15, ECO:0000250 UniProtKB:P46629, ECO:0000250 UniProtKB:Q9WTL2, ECO:0000269 PubMed:17925226}.
Form	Liquid
Conjugate	Non-conjugated
Storage Buffer	Rabbit IgG in phosphate buffered saline, pH 7.4, 150mM NaCl, 0.02% sodium azide and 50% glycerol.
Purification Method	Affinity-chromatography
Isotype	Rabbit IgG
Clonality	Monoclonal
Product Type	Recombinant Antibody
Immunogen Species	Homo sapiens (Human)
Research Area	Cancer; Signal transduction
Gene Names	RAB25
Clone No.	27H3

Image



Immunofluorescence staining of PC-3 cell with CSB-RA284745A0HU at 1:50, counter-stained with DAPI. The cells were fixed in 4% formaldehyde and blocked in 10% normal Goat Serum. The cells were then incubated with the antibody overnight at 4°C. The secondary antibody was Alexa Fluor 516-conjugated AffiniPure Goat Anti-Rabbit IgG(H+L).

Description

The production of the RAB25 recombinant monoclonal antibody involves a



sequence of sophisticated steps. Firstly, the RAB25 monoclonal antibody is harvested and its gene sequence is analyzed. A vector containing the RAB25 monoclonal antibody gene is then constructed and transfected into a host cell line for culture. A synthesized peptide, which is derived from human RAB25, is used as an immunogen during RAB25 monoclonal antibody synthesis. The resulting RAB25 recombinant monoclonal antibody is then purified through affinity chromatography and tested for specificity using ELISA and IF applications. It is only reactive with human RAB25 protein.

RAB25 is a member of the RAS oncogene family of small GTPases that plays a key role in regulating intracellular vesicle trafficking. It is primarily involved in the transport of cargo molecules from the trans-Golgi network to the plasma membrane and recycling endosomes, thus regulating cell polarity, cell motility, and cell adhesion. RAB25 is also implicated in various cellular processes, including cytokinesis, autophagy, and phagocytosis. Dysregulation of RAB25 has been linked to cancer progression and metastasis.