



Recombinant Human Membrane-associated phosphatidylinositol transfer protein 1 (PITPNM1), partial

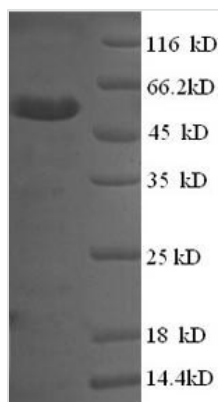
Product Code	CSB-RP019954h
Relevance	Regulates RHOA activity, and plays a role in cytoskeleton modeling. Necessary for normal completion of cytokinesis. Plays a role in maintaining normal diacylglycerol levels in the Golgi apparatus. Binds phosphatidyl inositol phosphates (in vitro). May catalyze the transfer of phosphatidylinositol and phosphatidylcholine between mbranes . Necessary for maintaining the normal structure of the endoplasmic reticulum and the Golgi apparatus. Required for protein export from the endoplasmic reticulum and the Golgi. Binds calcium ions.4 Publications
Storage	The shelf life is related to many factors, storage state, buffer ingredients, storage temperature and the stability of the protein itself. Generally, the shelf life of liquid form is 6 months at -20°C/-80°C. The shelf life of lyophilized form is 12 months at -20°C/-80°C.
Uniprot No.	O00562
Alias	Drosophila retinal degeneration B homologPhosphatidylinositol transfer protein, membrane-associated 1 ;PITPnm 1;Pyk2 N-terminal domain-interacting receptor 2 ;NIR-2
Product Type	Recombinant Protein
Immunogen Species	Homo sapiens (Human)
Purity	Greater than 90% as determined by SDS-PAGE.
Sequence	MLIKEYHILLPMSLDEYQVAQLYMIQKKSREESSGEGSGVEILANRPYTDGPGG SGQYTHKVYHVGSHIPGWFRALLPKAALQVEEESWNAYPYTRTRYTCPFVEK FSIEIETYYLPDGGQQPNVFNLSGAERRQRILDTIDIVRDAVAPGEYKAEEDPRL YHSVKTGRGPLSDDWARTAAQTGPLMCAYKLCKVEFRYWGMQAKIEQFIHDV GLRRVMLRAHRQAWCWQDEWTELSM
Lead Time	Delivery time may differ from different purchasing way or location, please kindly consult your local distributors for specific delivery time.
Research Area	Transport
Source	E.coli
Gene Names	PITPNM1
Expression Region	1-238aa
Notes	Repeated freezing and thawing is not recommended. Store working aliquots at 4°C for up to one week.
Tag Info	N-terminal GST-tagged



Mol. Weight 54.5kDa

Protein Description Partial

Image



(Tris-Glycine gel) Discontinuous SDS-PAGE (reduced) with 5% enrichment gel and 15% separation gel.

Reconstitution

We recommend that this vial be briefly centrifuged prior to opening to bring the contents to the bottom. Please reconstitute protein in deionized sterile water to a concentration of 0.1-1.0 mg/mL. We recommend to add 5-50% of glycerol (final concentration) and aliquot for long-term storage at -20°C/-80°C. Our default final concentration of glycerol is 50%. Customers could use it as reference.