

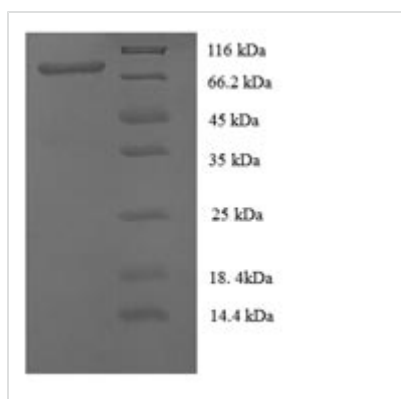


Recombinant Human Cell surface glycoprotein MUC18 (MCAM), partial

Product Code	CSB-RP104394h
Relevance	Plays a role in cell adhesion, and in cohesion of the endothelial monolayer at intercellular junctions in vascular tissue. Its expression may allow melanoma cells to interact with cellular elements of the vascular system, thereby enhancing heterogeneous tumor spread. Could be an adhesion molecule active in neural crest cells during embryonic development. Acts as surface receptor that triggers tyrosine phosphorylation of FYN and PTK2/FAK1, and a transient increase in the intracellular calcium concentration.
Storage	The shelf life is related to many factors, storage state, buffer ingredients, storage temperature and the stability of the protein itself. Generally, the shelf life of liquid form is 6 months at -20°C/-80°C. The shelf life of lyophilized form is 12 months at -20°C/-80°C.
Uniprot No.	P43121
Alias	Cell surface glycoprotein P1H12Melanoma cell adhesion molecule;Melanoma-associated antigen A32Melanoma-associated antigen MUC18S-endo 1 endothelial-associated antigen; CD146
Product Type	Recombinant Protein
Immunogen Species	Homo sapiens (Human)
Purity	Greater than 90% as determined by SDS-PAGE.
Sequence	LSQSQGNLSHVDWFSVHKEKRTLIFRVRQQGQGGQSEPGEYEQRLSLQDRGATL ALTQVTPQDERIFLCQGKRPRSQEYRIQLRVYKAPEEPNIQVNPLGIPVNSKEP EEVATCVGRNGYPIPQVIWYKNGRPLKEEKNRVHIQSSQTVESGLYTLQSILK AQLVKEDKDAQFYCELNYRLPSGNHMKESREVTVPVFYPTKVVLEVEPVGM LKEGDRVEIRCLADGNPPPHFSISKQNPSTREAEETNDNGVLVLEPARKEH SGRYECQGLDLDTMISLLSEPQELLVNYVSDVRVSPAAPERQEGSSLTLTCEA ESSQDLEFQWLREETGQVLERGPVLQLHDLKREAGGGYRCVASVPSIPGLNR TQLVNVAIFGPPWMAFKERKVVVKENMVLNLSCEASGHPRTISWNVNGTAS EQDQDPQRVLSTLNVLVTPELLETGVECTASNDLGKNTSILFLELVNLTTLTPD SNTTGLSTSTASPHTRANSTSTERKLPEPESRGVVIVAVIVCILVLAVLGAVLY FLYKKGKLPCRRSGKQEITLPPSRKSELVVEVKSDKLPEEMGLLQGSSGDKRA PGDQGEKYIDLRH
Lead Time	Delivery time may differ from different purchasing way or location, please kindly consult your local distributors for specific delivery time.
Research Area	Cell Adhesion
Source	E.coli
Gene Names	MCAM
Expression Region	50-646aa



Notes	Repeated freezing and thawing is not recommended. Store working aliquots at 4°C for up to one week.
Tag Info	N-terminal 6xHis-tagged
Mol. Weight	70.7kDa
Protein Description	Partial

Image


(Tris-Glycine gel) Discontinuous SDS-PAGE (reduced) with 5% enrichment gel and 15% separation gel.

Reconstitution	We recommend that this vial be briefly centrifuged prior to opening to bring the contents to the bottom. Please reconstitute protein in deionized sterile water to a concentration of 0.1-1.0 mg/mL. We recommend to add 5-50% of glycerol (final concentration) and aliquot for long-term storage at -20°C/-80°C. Our default final concentration of glycerol is 50%. Customers could use it as reference.
-----------------------	---