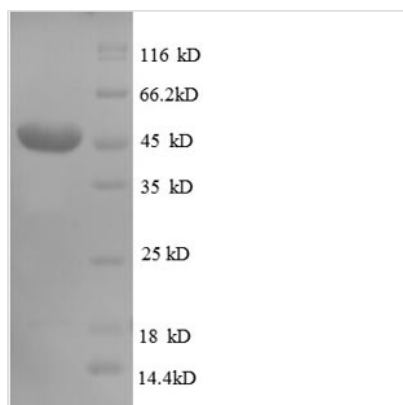




Recombinant Human CD320 antigen (CD320), partial

Product Code	CSB-EP865096HU1
Relevance	Germinal center-B (GC-B) cells differentiate into mory B-cells and plasma cells (PC) through interaction with T-cells and follicular dendritic cells (FDC). CD320 augments the proliferation of PC precursors generated by IL-10. Receptor for the cellular uptake of transcobalamin bound cobalamin.
Storage	The shelf life is related to many factors, storage state, buffer ingredients, storage temperature and the stability of the protein itself. Generally, the shelf life of liquid form is 6 months at -20°C/-80°C. The shelf life of lyophilized form is 12 months at -20°C/-80°C.
Uniprot No.	Q9NPF0
Alias	8D6 antigenFDC-signaling molecule 8D6 ;FDC-SM-8D6Transcobalamin receptor ;TCbIR;; CD320
Product Type	Recombinant Protein
Immunogen Species	Homo sapiens (Human)
Purity	Greater than 90% as determined by SDS-PAGE.
Sequence	SPLSTPTSAQAAGPSSGSCPPTKFQCRTSGLCVPLTWRCDRDLDCSDGSDEE ECRIEPCTQKGQCPPPPGLPCPCTGVSDCSGGTDKKLRNCSRLACLAGELR TLSDDCIPLTWRCDGHPDCPDSSDELGCGTNEILPEGDATTMGPPVTLESVTS LRNATTMGPPVTLESVPSVGNATSSSAGDQSGSPTAYGV
Lead Time	Delivery time may differ from different purchasing way or location, please kindly consult your local distributors for specific delivery time.
Research Area	Immunology
Source	E.coli
Gene Names	CD320
Expression Region	36-231aa
Notes	Repeated freezing and thawing is not recommended. Store working aliquots at 4°C for up to one week.
Tag Info	N-terminal GST-tagged
Mol. Weight	47.1kDa
Protein Description	Partial
Image	



(Tris-Glycine gel) Discontinuous SDS-PAGE (reduced) with 5% enrichment gel and 15% separation gel.

Reconstitution

We recommend that this vial be briefly centrifuged prior to opening to bring the contents to the bottom. Please reconstitute protein in deionized sterile water to a concentration of 0.1-1.0 mg/mL. We recommend to add 5-50% of glycerol (final concentration) and aliquot for long-term storage at -20°C/-80°C. Our default final concentration of glycerol is 50%. Customers could use it as reference.