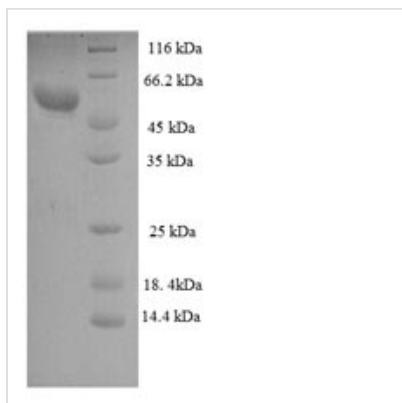




Recombinant Human Zona pellucida sperm-binding protein 3 (ZP3), partial

Product Code	CSB-RP145354h
Relevance	The mammalian zona pellucida, which mediates species-specific sperm binding, induction of the acrosome reaction and prevents post-fertilization polyspermy, is composed of three to four glycoproteins, ZP1, ZP2, ZP3, and ZP4. ZP3 is essential for sperm binding and zona matrix formation.
Storage	The shelf life is related to many factors, storage state, buffer ingredients, storage temperature and the stability of the protein itself. Generally, the shelf life of liquid form is 6 months at -20°C/-80°C. The shelf life of lyophilized form is 12 months at -20°C/-80°C.
Uniprot No.	P21754
Alias	Sperm receptorZP3A/ZP3BZona pellucida glycoprotein 3 ;Zp-3Zona pellucida protein C
Product Type	Recombinant Protein
Immunogen Species	Homo sapiens (Human)
Purity	Greater than 90% as determined by SDS-PAGE.
Sequence	QPLWLLQGGASHPETSVPVLVECQEATLMVMVSKDLFGTGKLIRAADLTLGP EACEPLVSMDETEDVVRFEVGLHECGNSMQVTDDALVYSTFLLHDPRPVGNLISI VRTNRAEPIECRYPRQGNVSSQAILPTWLPFRTTVFSEEKLTFSRLMEENWN AEKRSPTFHLGDAAHLQAEIHTGSHVPLRLFVDHCVATPTPDQNASPYHTIVDF HGCLVDGLTDASSAFKVPRPGPDTLQFTVDVFHFANDSRNMIYITCHLKVTLAE QDPDELNKACSFSPNSWFPVEGSADICQCCNKGDCGTPSHSRRQPHVMS QWSRS
Lead Time	Delivery time may differ from different purchasing way or location, please kindly consult your local distributors for specific delivery time.
Research Area	Developmental Biology
Source	E.coli
Gene Names	ZP3
Expression Region	23-346aa
Notes	Repeated freezing and thawing is not recommended. Store working aliquots at 4°C for up to one week.
Tag Info	N-terminal GST-tagged
Mol. Weight	63.0kDa
Protein Description	Partial
Image	



(Tris-Glycine gel) Discontinuous SDS-PAGE (reduced) with 5% enrichment gel and 15% separation gel.

Reconstitution

We recommend that this vial be briefly centrifuged prior to opening to bring the contents to the bottom. Please reconstitute protein in deionized sterile water to a concentration of 0.1-1.0 mg/mL. We recommend to add 5-50% of glycerol (final concentration) and aliquot for long-term storage at -20°C/-80°C. Our default final concentration of glycerol is 50%. Customers could use it as reference.