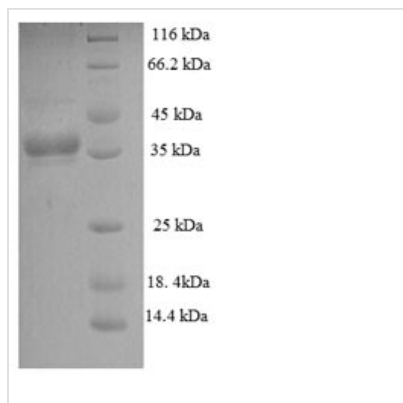




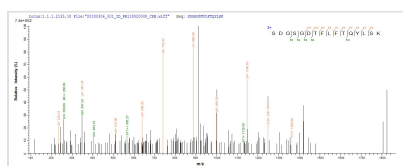
Recombinant Mycobacterium tuberculosis

Phosphate-binding protein PstS 1 (pstS1), partial

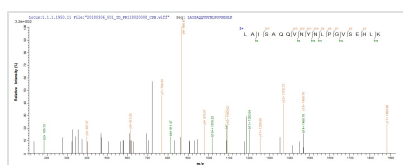
Product Code	CSB-RP149194Ba
Relevance	Part of the ABC transporter complex PstSACB involved in phosphate import.
Storage	The shelf life is related to many factors, storage state, buffer ingredients, storage temperature and the stability of the protein itself. Generally, the shelf life of liquid form is 6 months at -20°C/-80°C. The shelf life of lyophilized form is 12 months at -20°C/-80°C.
Uniprot No.	P9WGU0
Alias	Antigen Ag78 Protein antigen B Short name: PAB
Product Type	Recombinant Protein
Immunogen Species	Mycobacterium tuberculosis (strain CDC 1551 / Oshkosh)
Purity	Greater than 90% as determined by SDS-PAGE.
Sequence	CGSKPPSGSPETGAGAGTVATTPASSPVTLAETGSTLLYPLFNLWGPAFHERY PNVTITAQGTGSGAGIAQAAAGTVNIGASDAYLSEGDMAAHKGLMNIALAISAQ QVNYNLPGVSEHLKLNGKVLAAAMYQGTIKTWDDPQIAALNPGVNLPGTAVVPL HRSDGSGDTFLFTQYLSKQDPEGWGKSPGFGTTVDFPAVPGALGENGNGGM VTGCAETPGCVAYIGISFLDQASQRGLGEAQLGNSSGNFLLPDAQSIQAAAAG FASKTPANQAISMIDGPAPDGYPIINYEYAIVNNRQKDAATAQTLQAFLHWAITD GNKASFLDQVHFQPLPPAVVKLSDALIATIS
Lead Time	Delivery time may differ from different purchasing way or location, please kindly consult your local distributors for specific delivery time.
Research Area	Others
Source	E.coli
Gene Names	pstS1
Expression Region	24-373aa
Notes	Repeated freezing and thawing is not recommended. Store working aliquots at 4°C for up to one week.
Tag Info	N-terminal 6xHis-tagged
Mol. Weight	39.8kDa
Protein Description	Partial
Image	



(Tris-Glycine gel) Discontinuous SDS-PAGE (reduced) with 5% enrichment gel and 15% separation gel.



Based on the SEQUEST from database of E.coli host and target protein, the LC-MS/MS Analysis result of CSB-RP149194BA could indicate that this peptide derived from E.coli-expressed Homo sapiens (Human) pstS1.



Based on the SEQUEST from database of E.coli host and target protein, the LC-MS/MS Analysis result of CSB-RP149194BA could indicate that this peptide derived from E.coli-expressed Homo sapiens (Human) pstS1.

Reconstitution

We recommend that this vial be briefly centrifuged prior to opening to bring the contents to the bottom. Please reconstitute protein in deionized sterile water to a concentration of 0.1-1.0 mg/mL. We recommend to add 5-50% of glycerol (final concentration) and aliquot for long-term storage at -20°C/-80°C. Our default final concentration of glycerol is 50%. Customers could use it as reference.