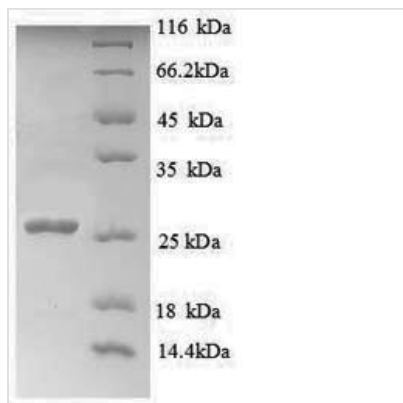




Recombinant Human Myelin transcription factor 1 (MYT1), partial

Product Code	CSB-EP015387HU
Relevance	Binds to the promoter regions of proteolipid proteins of the central nervous syst. May play a role in the development of neurons and oligodendrogalia in the CNS. May regulate a critical transition point in oligodendrocyte lineage development by modulating oligodendrocyte progenitor proliferation relative to terminal differentiation and up-regulation of myelin gene transcription.
Storage	The shelf life is related to many factors, storage state, buffer ingredients, storage temperature and the stability of the protein itself. Generally, the shelf life of liquid form is 6 months at -20°C/-80°C. The shelf life of lyophilized form is 12 months at -20°C/-80°C.
Uniprot No.	Q01538
Alias	Myelin transcription factor I ;MyTIPLPB1;Proteolipid protein-binding protein
Product Type	Recombinant Protein
Immunogen Species	Homo sapiens (Human)
Purity	Greater than 90% as determined by SDS-PAGE.
Sequence	GLGHISGKYASHRSASGCPLAARRQKEGSLNGSSFSWKSLKNEGPTCPTPGC DGSGHANGSFLTHRSLSGCPRATFAGKKGKLSGDEVLSPKFKTSDVLENDEEI KQLNQEIIRDLNESNSEMEAMVQLQSQISSMEKNLKNIEEENKLIEEQNEALFL ELSGLSQALIQSLANIRLPHMEPICEQNFDAYVSTLTDMYSNQ
Lead Time	Delivery time may differ from different purchasing way or location, please kindly consult your local distributors for specific delivery time.
Research Area	Developmental Biology
Source	E.coli
Gene Names	MYT1
Expression Region	900-1101aa
Notes	Repeated freezing and thawing is not recommended. Store working aliquots at 4°C for up to one week.
Tag Info	N-terminal 6xHis-tagged
Mol. Weight	26.1kDa
Protein Description	Partial
Image	



(Tris-Glycine gel) Discontinuous SDS-PAGE (reduced) with 5% enrichment gel and 15% separation gel.

Reconstitution

We recommend that this vial be briefly centrifuged prior to opening to bring the contents to the bottom. Please reconstitute protein in deionized sterile water to a concentration of 0.1-1.0 mg/mL. We recommend to add 5-50% of glycerol (final concentration) and aliquot for long-term storage at -20°C/-80°C. Our default final concentration of glycerol is 50%. Customers could use it as reference.