

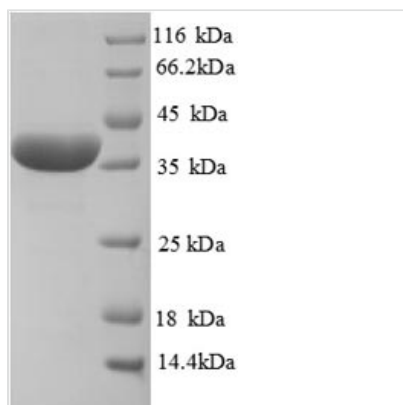


Recombinant Rat Haptoglobin (Hp), partial

Product Code	CSB-RP170694r
Relevance	<p>As a result of holysis, hoglobin is found to accumulate in the kidney and is secreted in the urine. Haptoglobin captures, and combines with free plasma hoglobin to allow hepatic recycling of he iron and to prevent kidney damage. Haptoglobin also acts as an antioxidant, has antibacterial activity and plays a role in modulating many aspects of the acute phase response. Hoglobin/haptoglobin complexes are rapidly cleared by the macrophage CD163 scavenger receptor expressed on the surface of liver Kupfer cells through an endocytic lysosomal degradation pathway .Uncleaved haptoglobin, also known as zonulin, plays a role in intestinal permeability, allowing intercellular tight junction disassbly, and controlling the equilibrium between tolerance and immunity to non-self antigens.</p>
Storage	The shelf life is related to many factors, storage state, buffer ingredients, storage temperature and the stability of the protein itself. Generally, the shelf life of liquid form is 6 months at -20°C/-80°C. The shelf life of lyophilized form is 12 months at -20°C/-80°C.
Uniprot No.	P06866
Alias	Liver regeneration-related protein LRRG173Zonulin
Product Type	Recombinant Protein
Immunogen Species	Rattus norvegicus (Rat)
Purity	Greater than 90% as determined by SDS-PAGE.
Sequence	VELGNDATDIEDDSCPKPPEIANGYVEHLVRYRCRQFYKLQTEGDGIYTLNSE KQWVNPAAGDKLPKCEAVCGKPKHPVDQVQRIIGGSMDAKGSFPWQAKMIS RHGLTTGATLISDQWLLTTAQNLFNLHSENATAKDIAPTLTLYVGKNQLVEIEKV VLHPERSVVDIGLIKQKVLVTEKVMPICLPSKDYVAPGRMGYVSGWGRNVN FRFTERLKYVMLPVADQEKCELHYEKSTVPEKKGAVSPVGVQPILNKHTFCAG LTKYEEDTCYGDAGSAFAVHDTEEDTWYAAGILSFDKSCAVAEYGVYVRATDL KDWWQETMAK
Lead Time	3-7 business days
Research Area	Epigenetics and Nuclear Signaling
Source	E.coli
Gene Names	Hp
Expression Region	19-346aa
Notes	Repeated freezing and thawing is not recommended. Store working aliquots at 4°C for up to one week.
Tag Info	N-terminal 6xHis-tagged
Mol. Weight	40.5kDa
Protein Description	Partial



Image



(Tris-Glycine gel) Discontinuous SDS-PAGE (reduced) with 5% enrichment gel and 15% separation gel.

Reconstitution

We recommend that this vial be briefly centrifuged prior to opening to bring the contents to the bottom. Please reconstitute protein in deionized sterile water to a concentration of 0.1-1.0 mg/mL. We recommend to add 5-50% of glycerol (final concentration) and aliquot for long-term storage at -20°C/-80°C. Our default final concentration of glycerol is 50%. Customers could use it as reference.