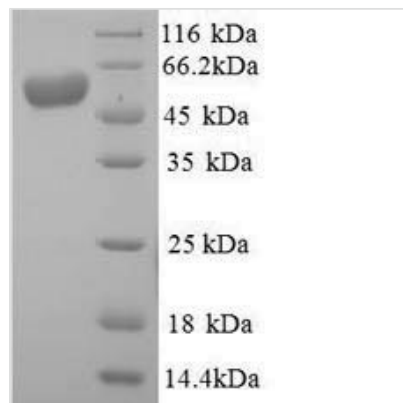




Recombinant Human Intestinal-type alkaline phosphatase (ALPI)

Product Code	CSB-YP001627HU
Storage	The shelf life is related to many factors, storage state, buffer ingredients, storage temperature and the stability of the protein itself. Generally, the shelf life of liquid form is 6 months at -20°C/-80°C. The shelf life of lyophilized form is 12 months at -20°C/-80°C.
Uniprot No.	P09923
Product Type	Recombinant Protein
Immunogen Species	Homo sapiens (Human)
Purity	Greater than 90% as determined by SDS-PAGE.
Sequence	VIPAEENPAFWNRQAAEALDAAKKLQPIQKVAKNLILFLGDGLGVPTVTATRIL KGQKNGKLGPEPLAMDREFPYLALSKTYNVDRQVPDSAATATAYLCGVKANF QTIGLSAAARFNQCNTTRGNEVISVMNRAKQAGKSGVVTTRVQHASPAGT YAHTVNRNWYSDADMPASARQEGCQDIATQLISNMDIDVILGGGRKYMFPMG TPDPEYPADASQNGIRLDGKNLVQEWLAKHQGAWYVWNRTELMQASLDQSV THLMGLFEPGDTKYEIHRDPTLDPPLMEMTEAALRLLSRNPGRGFYLFVEGGRI DHGHHEGVAYQALTEAVMFDDAIERAGQLTSEEDTLTLVTADHSHVFSFGGYT LRGSSIFGLAPSKAQDSKAYTSILYGNGPGYVFNSGVRPDVNESESGSPDYQ QQAAVPLSSETHGGEDVAVFARGPQAHLVHGVQEQSFVAHVMAFAACLEPY TACDLAPPACTTD
Lead Time	Delivery time may differ from different purchasing way or location, please kindly consult your local distributors for specific delivery time.
Research Area	Signal Transduction
Source	Yeast
Gene Names	ALPI
Protein Names	Recommended name: Intestinal-type alkaline phosphatase Short name= IAP Short name= Intestinal alkaline phosphatase EC= 3.1.3.1
Expression Region	20-503aa
Notes	Repeated freezing and thawing is not recommended. Store working aliquots at 4°C for up to one week.
Tag Info	N-terminal 6xHis-tagged
Mol. Weight	54.4kDa
Protein Description	Full Length of Mature Protein
Image	



(Tris-Glycine gel) Discontinuous SDS-PAGE (reduced) with 5% enrichment gel and 15% separation gel.

Description

The production of this Recombinant Human ALPI protein required the insertion of a DNA fragment (ALPI, 20-503aa) into an expression plasmid and the transferral of this vector into Yeast cells (the step of transformation). The cells were then cultured and induced to express the ALPI protein. This recombinant protein was fused with N-terminal 6xHis tag. Its purity is 90%+ determined by SDS-PAGE.

ALPI is a gene providing an instruction of making a protein named Intestinal-type alkaline phosphatase (ALPI) in human. ALPI protein is also known as IAP or intestinal alkaline phosphatase. This ALPI protein catalyzes that a phosphate monoester is hydrolyzed as an alcohol and phosphate. It is thought to function in the detoxification of lipopolysaccharide, and in the prevention of bacterial translocation in the gut. Increasing evidence has implied that human ALPI deficiency causes inflammatory bowel disease.

Reconstitution

We recommend that this vial be briefly centrifuged prior to opening to bring the contents to the bottom. Please reconstitute protein in deionized sterile water to a concentration of 0.1-1.0 mg/mL. We recommend to add 5-50% of glycerol (final concentration) and aliquot for long-term storage at -20°C/-80°C. Our default final concentration of glycerol is 50%. Customers could use it as reference.