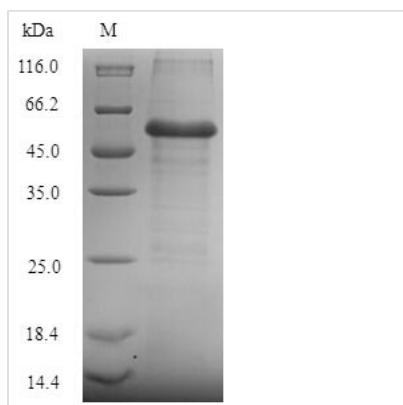




# Recombinant *Saccharomyces cerevisiae* Cystathionine beta-synthase (CYS4)

<b>Product Code</b>	CSB-YP004589SVG
<b>Storage</b>	The shelf life is related to many factors, storage state, buffer ingredients, storage temperature and the stability of the protein itself. Generally, the shelf life of liquid form is 6 months at -20°C/-80°C. The shelf life of lyophilized form is 12 months at -20°C/-80°C.
<b>Uniprot No.</b>	P32582
<b>Alias</b>	Beta-thionase;Serine sulfhydrase;Sulfur transfer protein 4
<b>Product Type</b>	Recombinant Protein
<b>Immunogen Species</b>	<i>Saccharomyces cerevisiae</i> (strain ATCC 204508 / S288c) (Baker's yeast)
<b>Purity</b>	Greater than 90% as determined by SDS-PAGE.
<b>Sequence</b>	MTKSEQQADSRHNVIDLVGNTPLIALKKLPKALGIKPQIYAKLELYNPGGSIKDRI AKSMVEEAEASGRIHPSRSTLIEPTSGNTGIGLALIGAIGYRTIITLPEKMSNEK VSVLKALGAEIIRTPTAAAWDSPESHIGVAKKLEKEIPGAVILDQYNNMMNPEA HYFGTGREIQRQLEDNLFDNLRAVVAGAGTGGTISGISKYLKEQNDKIQIVGA DPFGSILAQPENLNKTDITDYKVEGIGYDFVPQVLDRLIDVWYKTDDKPSFKY ARQLISNEGVLVGGSSGSAFTAVVKYCEDHPELTEDDVIVAIFPDSIRSULTKVF DDEWLKKNLWDDVLRFDSSKLEASTTKYADVFGNATVKDLHLKPVSVK ETAKVTDVIKILKDNQFDQLPVLTEDGKLSGLVTLSELLRKLSINNSNNDNTIKG KYLDFKKLNNFNDVSSYNENKSGKKKFIKFDENSKLSDLNRRFFEKNSSAVITDG LKPIHIVTKMDLLSYLA
<b>Lead Time</b>	Delivery time may differ from different purchasing way or location, please kindly consult your local distributors for specific delivery time.
<b>Research Area</b>	Others
<b>Source</b>	Yeast
<b>Gene Names</b>	CYS4
<b>Protein Names</b>	Recommended name: Cystathionine beta-synthase EC= 4.2.1.22 Alternative name(s): Beta-thionase Serine sulfhydrase Sulfur transfer protein 4
<b>Expression Region</b>	1-507aa
<b>Notes</b>	Repeated freezing and thawing is not recommended. Store working aliquots at 4°C for up to one week.
<b>Tag Info</b>	N-terminal 6xHis-tagged
<b>Mol. Weight</b>	58.0kDa
<b>Protein Description</b>	Full Length
<b>Image</b>	



(Tris-Glycine gel) Discontinuous SDS-PAGE (reduced) with 5% enrichment gel and 15% separation gel.

## Reconstitution

We recommend that this vial be briefly centrifuged prior to opening to bring the contents to the bottom. Please reconstitute protein in deionized sterile water to a concentration of 0.1-1.0 mg/mL. We recommend to add 5-50% of glycerol (final concentration) and aliquot for long-term storage at -20°C/-80°C. Our default final concentration of glycerol is 50%. Customers could use it as reference.