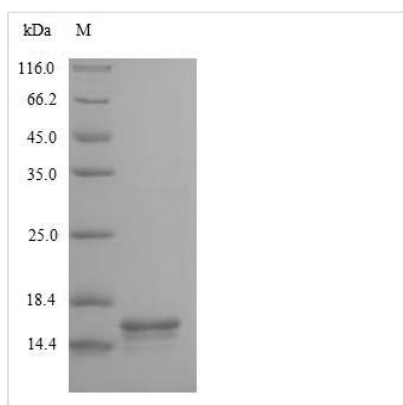




Recombinant Human T-cell surface glycoprotein CD3 epsilon chain (CD3E), partial,Yeast

Product Code	CSB-YP004931HU
Relevance	The CD3 complex mediates signal transduction, resulting in T-cell activation and proliferation. Required for normal immune responses (PubMed:15546002, PubMed:8490660).
Storage	The shelf life is related to many factors, storage state, buffer ingredients, storage temperature and the stability of the protein itself. Generally, the shelf life of liquid form is 6 months at -20°C/-80°C. The shelf life of lyophilized form is 12 months at -20°C/-80°C.
Uniprot No.	P07766
Alias	T-cell surface antigen T3/Leu-4 epsilon chain;CD_antigen: CD3e
Product Type	Recombinant Protein
Immunogen Species	Homo sapiens (Human)
Purity	Greater than 90% as determined by SDS-PAGE.
Lead Time	3-7 business days
Research Area	Immunology
Source	Yeast
Gene Names	CD3E
Protein Names	Recommended name: T-cell surface glycoprotein CD3 epsilon chain Alternative name(s): T-cell surface antigen T3/Leu-4 epsilon chain CD_antigen= CD3e
Notes	Repeated freezing and thawing is not recommended. Store working aliquots at 4°C for up to one week.
Tag Info	N-terminal His-tagged Tag-Free
Mol. Weight	13.8kDa
Protein Description	Extracellular Domain

Image



(Tris-Glycine gel) Discontinuous SDS-PAGE (reduced) with 5% enrichment gel and 15% separation gel.



Reconstitution

We recommend that this vial be briefly centrifuged prior to opening to bring the contents to the bottom. Please reconstitute protein in deionized sterile water to a concentration of 0.1-1.0 mg/mL. We recommend to add 5-50% of glycerol (final concentration) and aliquot for long-term storage at -20°C/-80°C. Our default final concentration of glycerol is 50%. Customers could use it as reference.