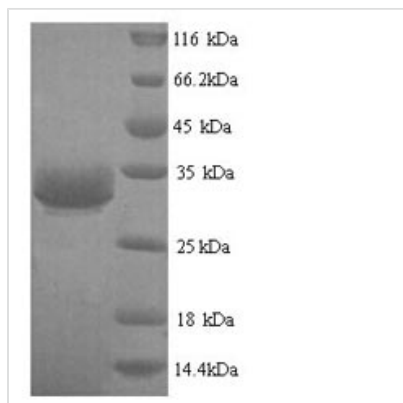




# Recombinant Human Ezrin protein (ESR2), partial

<b>Product Code</b>	CSB-YP007914HU1
<b>Relevance</b>	Probably involved in connections of major cytoskeletal structures to the plasma mbrane. In epithelial cells, required for the formation of microvilli and mbrane ruffles on the apical pole. Along with PLEKHG6, required for normal macropinocytosis.
<b>Storage</b>	The shelf life is related to many factors, storage state, buffer ingredients, storage temperature and the stability of the protein itself. Generally, the shelf life of liquid form is 6 months at -20°C/-80°C. The shelf life of lyophilized form is 12 months at -20°C/-80°C.
<b>Uniprot No.</b>	P15311
<b>Alias</b>	CytovillinVillin-2p81
<b>Product Type</b>	Recombinant Protein
<b>Immunogen Species</b>	Homo sapiens (Human)
<b>Purity</b>	Greater than 90% as determined by SDS-PAGE.
<b>Sequence</b>	MPKPINVRVTTMDAELEFAIQPNTTGKQLFDQVVKTIGLREVWYFGLHYVDNK GFPTWLKLDKKVSAQEVKRNPLQFKFRAKFYPEDVAEELIQDITQKLFFLQVK EGILSDEIYCPPETAVLLGSYAVQAKFGDYNKEVHKSGYLSSERLIPQVRMDQ HKLTRDQWEDRIQVWHAHRGMLKDNAMLEYLKIAQDLEMYGINYFEIKNKKG TDLWLGV DALGLNIYEKDDKLTPKIGFPWSEIRNISFN
<b>Lead Time</b>	Delivery time may differ from different purchasing way or location, please kindly consult your local distributors for specific delivery time.
<b>Research Area</b>	Cell Cycle
<b>Source</b>	Yeast
<b>Gene Names</b>	EZR
<b>Expression Region</b>	1-251aa
<b>Notes</b>	Repeated freezing and thawing is not recommended. Store working aliquots at 4°C for up to one week.
<b>Tag Info</b>	N-terminal 6xHis-tagged
<b>Mol. Weight</b>	31.4kDa
<b>Protein Description</b>	Partial

**Image**



(Tris-Glycine gel) Discontinuous SDS-PAGE (reduced) with 5% enrichment gel and 15% separation gel.

## Reconstitution

We recommend that this vial be briefly centrifuged prior to opening to bring the contents to the bottom. Please reconstitute protein in deionized sterile water to a concentration of 0.1-1.0 mg/mL. We recommend to add 5-50% of glycerol (final concentration) and aliquot for long-term storage at -20°C/-80°C. Our default final concentration of glycerol is 50%. Customers could use it as reference.