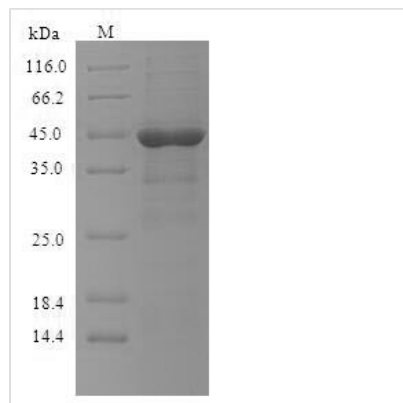




Recombinant Human High affinity immunoglobulin epsilon receptor subunit alpha (FCER1A), partial

Product Code	CSB-YP008532HU
Relevance	Binds to the Fc region of immunoglobulins epsilon. High affinity receptor. Responsible for initiating the allergic response. Binding of allergen to receptor-bound IgE leads to cell activation and the release of mediators (such as histamine) responsible for the manifestations of allergy. The same receptor also induces the secretion of important lymphokines.
Storage	The shelf life is related to many factors, storage state, buffer ingredients, storage temperature and the stability of the protein itself. Generally, the shelf life of liquid form is 6 months at -20°C/-80°C. The shelf life of lyophilized form is 12 months at -20°C/-80°C.
Uniprot No.	P12319
Alias	Fc-epsilon RI-alpha Short name: FcERI IgE Fc receptor subunit alpha
Product Type	Recombinant Protein
Immunogen Species	Homo sapiens (Human)
Purity	Greater than 90% as determined by SDS-PAGE.
Sequence	VPQKPKVSLNPPWNRIFKGENVTLCNGNNFFEVSSTKW FHNGSLSEETNSS LNIVNAKFEDSGEYKQCQHQVNESEPVYLEVFSDWLLLQASAEVVM EGQPLF LRCHGWRNWDVYKVIYYKDGEALKYWYENHNISITNATVEDSGTYYCTGKVV QLDYESEPLNITVIKAPREKYWLQ
Lead Time	Delivery time may differ from different purchasing way or location, please kindly consult your local distributors for specific delivery time.
Research Area	Immunology
Source	Yeast
Gene Names	FCER1A
Protein Names	Recommended name: High affinity immunoglobulin epsilon receptor subunit alpha Alternative name(s): Fc-epsilon RI-alpha Short name= FcERI IgE Fc receptor subunit alpha
Expression Region	26-205aa
Notes	Repeated freezing and thawing is not recommended. Store working aliquots at 4°C for up to one week.
Tag Info	N-terminal 6xHis-tagged
Mol. Weight	23.0kDa
Protein Description	Extracellular Domain
Image	



(Tris-Glycine gel) Discontinuous SDS-PAGE (reduced) with 5% enrichment gel and 15% separation gel.

Description

Delve into the intricacies of immunological research with our Recombinant Human FCER1A, a high-affinity immunoglobulin epsilon receptor subunit alpha. FCER1A plays a central role in allergic reactions and inflammatory responses, making it an essential protein for understanding the complex mechanisms underlying these processes in humans.

Our Recombinant Human FCER1A protein is produced in a yeast expression system, providing the extracellular domain of the protein (26-205 amino acids). The inclusion of an N-terminal 6xHis-tag enables efficient purification and detection in a range of experimental applications. With a purity greater than 90% as determined by SDS-PAGE, this recombinant protein ensures reproducible results and high-quality performance in your research. The product is available in both liquid and lyophilized powder forms, offering flexibility to suit your specific experimental needs.

Reconstitution

We recommend that this vial be briefly centrifuged prior to opening to bring the contents to the bottom. Please reconstitute protein in deionized sterile water to a concentration of 0.1-1.0 mg/mL. We recommend to add 5-50% of glycerol (final concentration) and aliquot for long-term storage at -20°C/-80°C. Our default final concentration of glycerol is 50%. Customers could use it as reference.