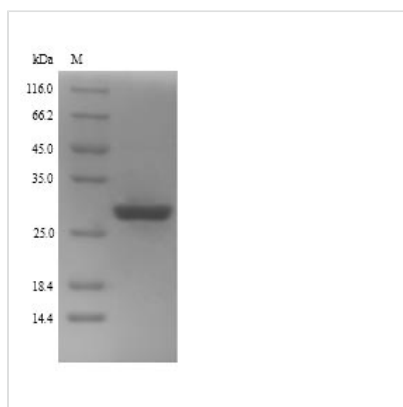




Recombinant Human Zinc finger protein GLI2 (GLI2), partial

| | |
|----------------------------|---|
| Product Code | CSB-YP009500HU |
| Relevance | Functions as transcription regulator in the hedgehog (Hh) pathway (PubMed:18455992). Functions as transcriptional activator (PubMed:9557682, PubMed:19878745, PubMed:24311597). May also function as transcriptional repressor (By similarity). Requires STK36 for full transcriptional activator activity. Required for normal embryonic development (PubMed:15994174, PubMed:20685856). |
| Storage | The shelf life is related to many factors, storage state, buffer ingredients, storage temperature and the stability of the protein itself. Generally, the shelf life of liquid form is 6 months at -20°C/-80°C. The shelf life of lyophilized form is 12 months at -20°C/-80°C. |
| Uniprot No. | P10070 |
| Alias | GLI family zinc finger protein 2 Tax helper protein |
| Product Type | Recombinant Protein |
| Immunogen Species | Homo sapiens (Human) |
| Purity | Greater than 90% as determined by SDS-PAGE. |
| Sequence | EQLADLKEDLDRDDCKQEAEEVVIYETNCHWEDCTKEYDTQEQLVHHINNEHIH GEKKEFVCRWQACTREQKPFKAQYMLVVHMRRTGEKPHKCTFEGCSKAYS RLENLKTHLRSHTGEKPYVCEHEGCNKAFSNASDRAKHQNRTHSNEKPYICKI PGCTKRYTDPSSLRKHVKT VHGPDAHVTKKQRNDVHLRTPLLKENG DSEAGT EPGGPESTEASSTSQAVEDCL |
| Lead Time | Delivery time may differ from different purchasing way or location, please kindly consult your local distributors for specific delivery time. |
| Research Area | Epigenetics and Nuclear Signaling |
| Source | Yeast |
| Gene Names | GLI2 |
| Protein Names | Recommended name: Zinc finger protein GLI2 Alternative name(s): Tax helper protein |
| Expression Region | 412-641aa |
| Notes | Repeated freezing and thawing is not recommended. Store working aliquots at 4°C for up to one week. |
| Tag Info | N-terminal 6xHis-tagged |
| Mol. Weight | 28.5kDa |
| Protein Description | Partial |
| Image | |



(Tris-Glycine gel) Discontinuous SDS-PAGE (reduced) with 5% enrichment gel and 15% separation gel.

Reconstitution

We recommend that this vial be briefly centrifuged prior to opening to bring the contents to the bottom. Please reconstitute protein in deionized sterile water to a concentration of 0.1-1.0 mg/mL. We recommend to add 5-50% of glycerol (final concentration) and aliquot for long-term storage at -20°C/-80°C. Our default final concentration of glycerol is 50%. Customers could use it as reference.