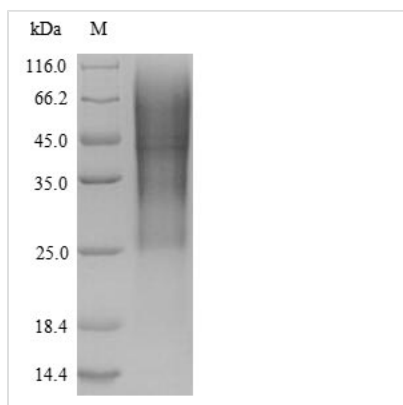




# Recombinant Rat Glucagon-like peptide 1 receptor (Glp1r), partial

<b>Product Code</b>	CSB-YP009514RA1
<b>Relevance</b>	G-protein coupled receptor for glucagon-like peptide 1 (GLP-1). Ligand binding triggers activation of a signaling cascade that leads to the activation of adenylyl cyclase and increased intracellular cAMP levels. Plays a role in regulating insulin secretion in response to GLP-1
<b>Storage</b>	The shelf life is related to many factors, storage state, buffer ingredients, storage temperature and the stability of the protein itself. Generally, the shelf life of liquid form is 6 months at -20°C/-80°C. The shelf life of lyophilized form is 12 months at -20°C/-80°C.
<b>Uniprot No.</b>	P32301
<b>Product Type</b>	Recombinant Protein
<b>Immunogen Species</b>	Rattus norvegicus (Rat)
<b>Purity</b>	Greater than 90% as determined by SDS-PAGE.
<b>Sequence</b>	GPRPQGATVSLSETVQKWREYRHQCQRFLTEAPLLATGLFCNRTFDDYACW PDGPPGSFVNVSCPWYLPWASSVLQGHVYRFCTAEGIWLHKDNSSLPWRDL SECEESKQGGERN
<b>Lead Time</b>	3-7 business days
<b>Source</b>	Yeast
<b>Gene Names</b>	Glp1r
<b>Protein Names</b>	Glpr
<b>Expression Region</b>	22-135aa
<b>Notes</b>	Repeated freezing and thawing is not recommended. Store working aliquots at 4°C for up to one week.
<b>Tag Info</b>	N-terminal 6xHis-tagged
<b>Mol. Weight</b>	15.1 kDa
<b>Protein Description</b>	Partial

Image



(Tris-Glycine gel) Discontinuous SDS-PAGE (reduced) with 5% enrichment gel and 15% separation gel.

**The reducing (R) protein migrates as 60 kDa in SDS-PAGE may be due to glycosylation.**

**Recommended Product**

## Reconstitution

We recommend that this vial be briefly centrifuged prior to opening to bring the contents to the bottom. Please reconstitute protein in deionized sterile water to a concentration of 0.1-1.0 mg/mL. We recommend to add 5-50% of glycerol (final concentration) and aliquot for long-term storage at -20°C/-80°C. Our default final concentration of glycerol is 50%. Customers could use it as reference.