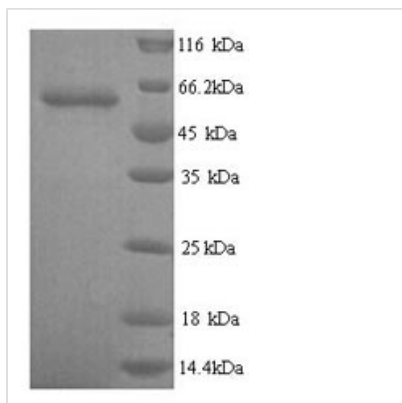




Recombinant Human Glypican-6 (GPC6)

Product Code	CSB-YP009708HU
Relevance	Cell surface proteoglycan that bears heparan sulfate. Putative cell surface coreceptor for growth factors, Extracellular domain matrix proteins, proteases and anti-proteases . Enhances migration and invasion of cancer cells through WNT5A signaling.1 Publication
Storage	The shelf life is related to many factors, storage state, buffer ingredients, storage temperature and the stability of the protein itself. Generally, the shelf life of liquid form is 6 months at -20°C/-80°C. The shelf life of lyophilized form is 12 months at -20°C/-80°C.
Uniprot No.	Q9Y625
Product Type	Recombinant Protein
Immunogen Species	Homo sapiens (Human)
Purity	Greater than 90% as determined by SDS-PAGE.
Sequence	DVKARSCGEVRQAYGAKGFSADIPYQEIAGEHLRCPQEYTCCTTEMEDKLS QQSKLEFENLVEETSHFVRTTFVSRHKKFDEFFRELLENAAKSLNDMFVRTYG MLYMQNSEVFQDLFTTELKRYTGGNVNLEEMLNDFWARLLERMFQLINPQYH FSEDYLECVSKYTDQLKPFQDVPRKLKIQVTRAFIAARTFVQGLTVGREVANRV SKVSPTPGCIRALMKMLYCPYCRGLPTVRPCNNYCLNVMKGCLANQADLDTE WNLFIDAMLLVAERLEGPFNIESVMDPIDVKISEAIMNMQENSMQVSAKVFQG CGQPKPAPALRSARSAPENFNTRFRPYNPEERPTTAAGTSLDRLVTDIKEKLK LSKKVWSALPYTICKDESVTAGTSNEEECWNGHASKARYLPEIMNDGLTNQINN PEVDVDITRPDTFIRQQIMALRVMTNKLKNAYNGNDVNFQDTSDESSGSGSGS GCMDDVCPTEFEFVTTEAPAVDPDRREVDS
Lead Time	Delivery time may differ from different purchasing way or location, please kindly consult your local distributors for specific delivery time.
Research Area	Signal Transduction
Source	Yeast
Gene Names	GPC6
Expression Region	24-529aa
Notes	Repeated freezing and thawing is not recommended. Store working aliquots at 4°C for up to one week.
Tag Info	N-terminal 6xHis-tagged
Mol. Weight	59.6kDa
Protein Description	Full Length of Mature Protein

Image



(Tris-Glycine gel) Discontinuous SDS-PAGE (reduced) with 5% enrichment gel and 15% separation gel.

Reconstitution

We recommend that this vial be briefly centrifuged prior to opening to bring the contents to the bottom. Please reconstitute protein in deionized sterile water to a concentration of 0.1-1.0 mg/mL. We recommend to add 5-50% of glycerol (final concentration) and aliquot for long-term storage at -20°C/-80°C. Our default final concentration of glycerol is 50%. Customers could use it as reference.