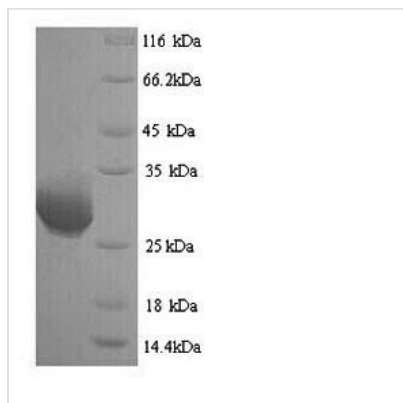




# Recombinant Human Granzyme B (GZMB)

<b>Product Code</b>	CSB-YP010082HU
<b>Relevance</b>	This enzyme is necessary for target cell lysis in cell-mediated immune responses. It cleaves after Asp. Ses to be linked to an activation cascade of caspases (aspartate-specific cysteine proteases) responsible for apoptosis execution. Cleaves caspase-3, -7, -9 and 10 to give rise to active enzymes mediating apoptosis.
<b>Storage</b>	The shelf life is related to many factors, storage state, buffer ingredients, storage temperature and the stability of the protein itself. Generally, the shelf life of liquid form is 6 months at -20°C/-80°C. The shelf life of lyophilized form is 12 months at -20°C/-80°C.
<b>Uniprot No.</b>	P10144
<b>Alias</b>	C11CTLA-1Cathepsin G-like 1 ;CTSG1Cytotoxic T-lymphocyte proteinase 2 ;Lymphocyte proteaseFragmentin-2Granzyme-2Human lymphocyte protein ;HLPSECTT-cell serine protease 1-3E
<b>Product Type</b>	Recombinant Protein
<b>Immunogen Species</b>	Homo sapiens (Human)
<b>Purity</b>	Greater than 90% as determined by SDS-PAGE.
<b>Sequence</b>	IIGGHEAKPHSRPYMAYLMIWDQKSLKRCGGFLIRDDFVLTAHHCWGSSINVTL GAHNIKEQEPTQQFIPVKRPIPHPAYNPKNFSNDIMLLQLERKAKRTRAVQPLR LPSNKAQVKPGQTCSVAGWGQTAPLGKHSHTLQEVKMTVQEDRKCESDLRH YYDSTIELCVGDPEIKKTSFKGDSGGPLVCNKVAQGIVSYGRNNGMPRACTK VSSFVHWIKKTMKRY
<b>Lead Time</b>	Delivery time may differ from different purchasing way or location, please kindly consult your local distributors for specific delivery time.
<b>Research Area</b>	Immunology
<b>Source</b>	Yeast
<b>Gene Names</b>	GZMB
<b>Protein Names</b>	Recommended name: Granzyme B EC= 3.4.21.79 Alternative name(s): C11 CTLA-1 Cathepsin G-like 1 Short name= CTSG1 Cytotoxic T-lymphocyte proteinase 2 Short name= Lymphocyte protease Fragmentin-2 Granzyme-2
<b>Expression Region</b>	21-247aa
<b>Notes</b>	Repeated freezing and thawing is not recommended. Store working aliquots at 4°C for up to one week.
<b>Tag Info</b>	N-terminal 6xHis-tagged
<b>Mol. Weight</b>	27.5kDa
<b>Protein Description</b>	Full Length of Mature Protein
<b>Image</b>	



(Tris-Glycine gel) Discontinuous SDS-PAGE (reduced) with 5% enrichment gel and 15% separation gel.

## Reconstitution

We recommend that this vial be briefly centrifuged prior to opening to bring the contents to the bottom. Please reconstitute protein in deionized sterile water to a concentration of 0.1-1.0 mg/mL. We recommend to add 5-50% of glycerol (final concentration) and aliquot for long-term storage at -20°C/-80°C. Our default final concentration of glycerol is 50%. Customers could use it as reference.