

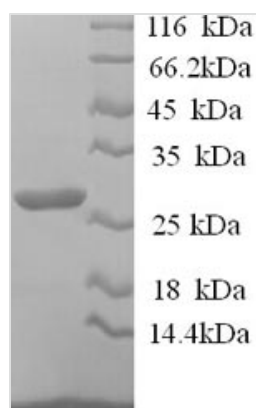


Recombinant Sheep Interleukin-12 subunit beta (IL12B)

Product Code	CSB-YP011587SH
Relevance	Cytokine that can act as a growth factor for activated T and NK cells, enhance the lytic activity of NK/lymphokine-activated killer cells, and stimulate the production of IFN-gamma by resting PBMC. Associates with IL23A to form the IL-23 interleukin, a heterodimeric cytokine which functions in innate and adaptive immunity. IL-23 may constitute with IL-17 an acute response to infection in peripheral tissues. IL-23 binds to a heterodimeric receptor complex composed of IL12RB1 and IL23R, activates the Jak-Stat signaling cascade, stimulates more rather than naive T-cells and promotes production of proinflammatory cytokines. IL-23 induces autoimmune inflammation and thus may be responsible for autoimmune inflammatory diseases and may be important for tumorigenesis .
Storage	The shelf life is related to many factors, storage state, buffer ingredients, storage temperature and the stability of the protein itself. Generally, the shelf life of liquid form is 6 months at -20°C/-80°C. The shelf life of lyophilized form is 12 months at -20°C/-80°C.
Uniprot No.	P68220
Alias	Cytotoxic lymphocyte maturation factor 40 kDa subunit ;CLMF p40IL-12 subunit p40
Product Type	Recombinant Protein
Immunogen Species	Ovis aries (Sheep)
Purity	Greater than 90% as determined by SDS-PAGE.
Sequence	IWELEKNVYVVELDWYPNAPGETVVLTCDTPEEDGITWTSDQSSEVLGSGKTL TIQVKEFGDAGQYTCHKGGEVLSRSLLLHHKKEDGIWSTDILKDQKEPKAKSFL KCEAKDYSGHFTCSWLTAISTNLKFSVKSSRGSSDPRGVTCGAASLSAEKVS MDHREYNKYTVEQCQEGSACPAAEESLPIEVVMEAVHKLKYENYTSSFFIRDIK PDPPKNLQLRPLKNSRQVEVSWEYPDTWSTPHSYFSLTFCVQVQGKNKREK KLFTDQTSKVTCHKDANIRVQARDRYSSFWSEWASVSCS
Lead Time	Delivery time may differ from different purchasing way or location, please kindly consult your local distributors for specific delivery time.
Research Area	Others
Source	Yeast
Gene Names	IL12B
Protein Names	Recommended name: Interleukin-12 subunit beta Short name= IL-12B Alternative name(s): Cytotoxic lymphocyte maturation factor 40 kDa subunit Short name= CLMF p40 IL-12 subunit p40
Expression Region	23-327aa



Notes	Repeated freezing and thawing is not recommended. Store working aliquots at 4°C for up to one week.
Tag Info	N-terminal 6xHis-tagged
Mol. Weight	36.5kDa
Protein Description	Full Length of Mature Protein

Image


(Tris-Glycine gel) Discontinuous SDS-PAGE (reduced) with 5% enrichment gel and 15% separation gel.

Reconstitution	We recommend that this vial be briefly centrifuged prior to opening to bring the contents to the bottom. Please reconstitute protein in deionized sterile water to a concentration of 0.1-1.0 mg/mL. We recommend to add 5-50% of glycerol (final concentration) and aliquot for long-term storage at -20°C/-80°C. Our default final concentration of glycerol is 50%. Customers could use it as reference.
-----------------------	---