



Recombinant Human Integrin alpha-IIb (ITGA2B), partial

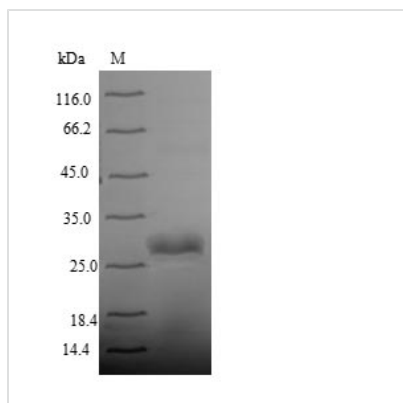
Product Code	CSB-YP011865HU
Relevance	Integrin alpha-IIb/beta-3 is a receptor for fibronectin, fibrinogen, plasminogen, prothrombin, thrombospondin and vitronectin. It recognizes the sequence R-G-D in a wide array of ligands. It recognizes the sequence H-H-L-G-G-G-A-K-Q-A-G-D-V in fibrinogen gamma chain. Following activation integrin alpha-IIb/beta-3 brings about platelet/platelet interaction through binding of soluble fibrinogen. This step leads to rapid platelet aggregation which physically plugs ruptured endothelial cell surface.
Storage	The shelf life is related to many factors, storage state, buffer ingredients, storage temperature and the stability of the protein itself. Generally, the shelf life of liquid form is 6 months at -20°C/-80°C. The shelf life of lyophilized form is 12 months at -20°C/-80°C.
Uniprot No.	P08514
Alias	GPalpha IIb ; GPIIbPlatelet membrane glycoprotein IIb; CD41
Product Type	Recombinant Protein
Immunogen Species	Homo sapiens (Human)
Purity	Greater than 90% as determined by SDS-PAGE.
Sequence	CVPQLQLTASVTGSPLLVGADNVLELQMDAANEGEGAYEALAVHLPQGAHY MRALSNVEGFERLICNQKKENETRVVLCGLNPMKKNAQIGIAMLVSVGNLEE AGESVSFQLQIRSKNSQNPNSKIVLLDVPVRAEAQVELRGNSFPASLVVAAEE GEREQNSLDSWGPKEHTYELHNNPGTVNGLHLSIHLPGQSQPSDLLYILDI QPQGGGLQCFPPQPPVNPLKVDWGLPIPSPIHPAHHKR
Lead Time	Delivery time may differ from different purchasing way or location, please kindly consult your local distributors for specific delivery time.
Research Area	Cardiovascular
Source	Yeast
Gene Names	ITGA2B
Protein Names	Recommended name: Integrin alpha-IIb Alternative name(s): GPalpha IIb Short name= GPIIb Platelet membrane glycoprotein IIb CD_antigen= CD41 Cleaved into the following 3 chains: 1. Integrin alpha-IIb heavy chain 2. Integrin
Expression Region	639-887aa
Notes	Repeated freezing and thawing is not recommended. Store working aliquots at 4°C for up to one week.
Tag Info	N-terminal 6xHis-tagged
Mol. Weight	29.0kDa



Protein Description

Partial

Image



(Tris-Glycine gel) Discontinuous SDS-PAGE (reduced) with 5% enrichment gel and 15% separation gel.

Reconstitution

We recommend that this vial be briefly centrifuged prior to opening to bring the contents to the bottom. Please reconstitute protein in deionized sterile water to a concentration of 0.1-1.0 mg/mL. We recommend to add 5-50% of glycerol (final concentration) and aliquot for long-term storage at -20°C/-80°C. Our default final concentration of glycerol is 50%. Customers could use it as reference.