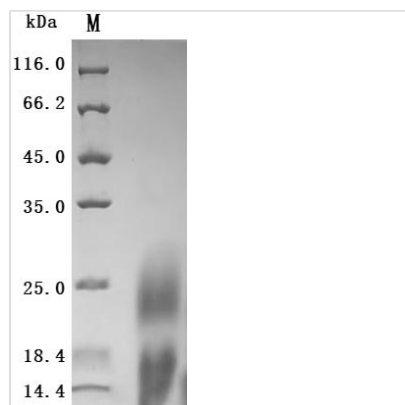


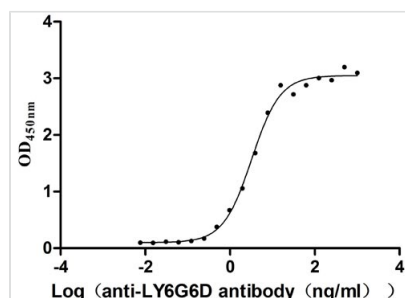


Recombinant Human Lymphocyte antigen 6 complex locus protein G6d (LY6G6D) (Active)

Product Code	CSB-YP013246HU
Storage	The shelf life is related to many factors, storage state, buffer ingredients, storage temperature and the stability of the protein itself. Generally, the shelf life of liquid form is 6 months at -20°C/-80°C. The shelf life of lyophilized form is 12 months at -20°C/-80°C.
Uniprot No.	O95868
Form	Lyophilized powder
Storage Buffer	Lyophilized from a 0.2 µm filtered 20 mM Tris-HCl, 0.5 M NaCl, 6% Trehalose, pH 8.0
Product Type	Recombinant Protein
Immunogen Species	Homo sapiens (Human)
Biological Activity	Measured by its binding ability in a functional ELISA. Immobilized Human LY6G6D at 2 µg/mL can bind Anti-LY6G6D recombinant antibody (CSB-RA013246MA1HU), the EC50 is 2.816-3.741 ng/mL.
Purity	Greater than 95% as determined by SDS-PAGE.
Sequence	NRMRCYNCGGSPSSSCKEAVTTCGEGRPQPGLEQIKLPGNPPVTLIHQHPAC VAAHHCNQVETESVGDVTYPAHRDCYLGDLNS
Lead Time	Basically, we can dispatch the products out in 3-7 working days after receiving your orders. Delivery time may differ from different purchasing way or location, please kindly consult your local distributors for specific delivery time.
Research Area	Immunology
Source	Yeast
Gene Names	LY6G6D
Expression Region	20-104aa
Notes	Repeated freezing and thawing is not recommended. Store working aliquots at 4°C for up to one week.
Tag Info	N-terminal 6xHis-tagged
Mol. Weight	11.1 kDa
Protein Description	Full Length of Mature Protein
Image	



(Tris-Glycine gel) Discontinuous SDS-PAGE (reduced) with 5% enrichment gel and 15% separation gel.



Activity
Measured by its binding ability in a functional ELISA. Immobilized Human LY6G6D at 2 µg/mL can bind Anti-LY6G6D recombinant antibody (CSB-RA013246MA1HU), the EC₅₀ is 2.816-3.741 ng/mL.

Description

This Human LY6G6D recombinant protein was produced in Yeast, where the gene sequence encoding Human LY6G6D (20-104aa) was expressed with the N-terminal 6xHis tag. The purity of this LY6G6D protein was greater than 95%. The activity was validated.

LY6G6D gene encodes a protein of 133 amino acid residues with a molecular weight of 13.7 kDa and an isoelectric point of 6.56. The N-terminal 19 amino acid residues are the signal peptide, and the mature protein is composed of 85 amino acid residues. By bioinformatics analysis, the protein has a Ly-6/UPAR-like domain, which starts with leucine or isoleucine as the N-terminal and has 8-10 conserved cysteines. It is a member of the Ly-6 superfamily of glycosylphosphatidylinositol (GPI)-anchored cell surface proteins, and the 104th amino acid is the GPI anchoring site.

LY6G6D may be related to the occurrence of tumors, the characteristics of tumor stem cells, and the metastasis of tumor cells. However, the signaling pathways and mechanisms of LY6G6D in tumors need further research and exploration. It is expected that LY6G6D can be used as a potential new biological therapeutic target to provide new theoretical basis and methods for tumor treatment research.

Endotoxin

Less than 1.0 EU/ug as determined by LAL method.

Reconstitution

We recommend that this vial be briefly centrifuged prior to opening to bring the contents to the bottom. Please reconstitute protein in deionized sterile water to a concentration of 0.1-1.0 mg/mL. We recommend to add 5-50% of glycerol (final concentration) and aliquot for long-term storage at -20/-80. Our default final concentration of glycerol is 50%. Customers could use it as reference.