



Recombinant Mouse Protein disulfide-isomerase A2 (Pdia2)

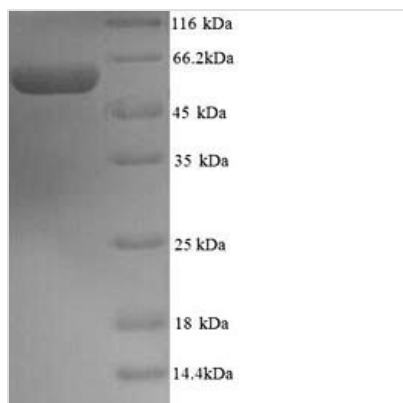
Product Code	CSB-YP017719MO
Relevance	Acts as an intracellular estrogen-binding protein. May be involved in modulating cellular levels and biological functions of estrogens in the pancreas. May act as a chaperone that inhibits aggregation of misfolded proteins .
Storage	The shelf life is related to many factors, storage state, buffer ingredients, storage temperature and the stability of the protein itself. Generally, the shelf life of liquid form is 6 months at -20°C/-80°C. The shelf life of lyophilized form is 12 months at -20°C/-80°C.
Uniprot No.	D3Z6P0
Alias	PDlp
Product Type	Recombinant Protein
Immunogen Species	Mus musculus (Mouse)
Purity	Greater than 90% as determined by SDS-PAGE.
Sequence	QGEPPGGPSEVLPEEPTGEEVPKEDGILVLNHR T LSLALQEHSALMVEFYAPW CGHCKELAPEYSKAAALLAAESAVVTLAKVDGPAEPELTKEFEVVGYP T LKFF QNGNRTNP E EYAGPKTAEGIAEWLRRRVGPSATHLEDEEGVQALMAKWDMV VIGFFQDLQGKDMATFLALAKDALDMTFGFTDQ PQLFEKFGLTKDTVVLFKKF DEGRADFPVDKETGLDLGDL SRFLVIHSMHLVTEFNSQTSPKIFA A KILNHLLLF VNQTLAQHRELLTDFREAAPPFRGQVLFVMVDVAADNSHVLN Y FGLKAE E AP TLRLIN VETTKKYAPTGVIAITAASVA AFCQAVLHGEIKHYLLS QEIPPDWDQGP VKTLVSKNF EQVAFDETKNV FVKFYAPWCSHCKEMAPAW EALAEKYKDREDI VIAELDATANELEAFSVLGYPTL KFFFPAGPDRKVIDYKSTRDLETFSKFLDSGG HLPKEEPKEPAASAP E AQANSTLGPKEEL
Lead Time	Delivery time may differ from different purchasing way or location, please kindly consult your local distributors for specific delivery time.
Research Area	Others
Source	Yeast
Gene Names	Pdia2
Protein Names	Recommended name: Protein disulfide-isomerase A2 EC= 5.3.4.1 Alternative name(s): PDlp
Expression Region	21-527aa
Notes	Repeated freezing and thawing is not recommended. Store working aliquots at 4°C for up to one week.
Tag Info	N-terminal 6xHis-tagged
Mol. Weight	58.2kDa



Protein Description

Full Length of Mature Protein

Image



(Tris-Glycine gel) Discontinuous SDS-PAGE (reduced) with 5% enrichment gel and 15% separation gel.

Reconstitution

We recommend that this vial be briefly centrifuged prior to opening to bring the contents to the bottom. Please reconstitute protein in deionized sterile water to a concentration of 0.1-1.0 mg/mL. We recommend to add 5-50% of glycerol (final concentration) and aliquot for long-term storage at -20°C/-80°C. Our default final concentration of glycerol is 50%. Customers could use it as reference.