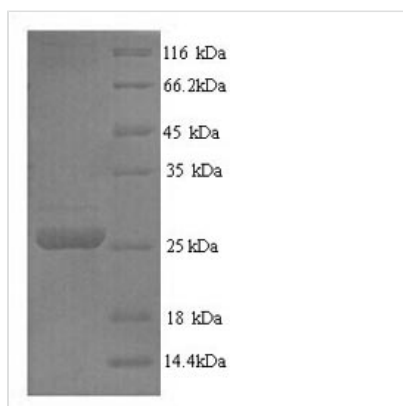




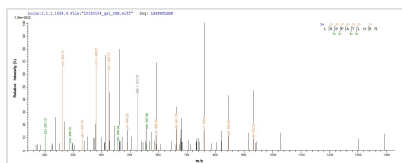
Recombinant Pig Trypsin

Product Code	CSB-YP018814PI
Storage	The shelf life is related to many factors, storage state, buffer ingredients, storage temperature and the stability of the protein itself. Generally, the shelf life of liquid form is 6 months at -20°C/-80°C. The shelf life of lyophilized form is 12 months at -20°C/-80°C.
Uniprot No.	P00761
Product Type	Recombinant Protein
Immunogen Species	Sus scrofa (Pig)
Purity	Greater than 90% as determined by SDS-PAGE. Greater than 95% as determined by SEC-HPLC.
Sequence	IVGGYTCAANSIPYQVSLNSGSHFCGGSLINSQWVVSAAHCYKSRIQVRLGEH NIDVLEGNEQFINAAKIITHPNFNGNTLDNDIMLIKLSPPATLNSRVATVSLPRSC AAAGTECLISGWGNTKSSGSSYPSLLQCLKAPVLSOSSCKSSYPGQITGNMIC VGFLEGGKDSCQGDSSGPPVVCNGQLQGIVSWGYGCAQKNKPGVYTKVCNY VNWIQQTIAAN
Lead Time	3-7 business days
Research Area	Signal Transduction
Source	Yeast
Expression Region	9-231aa
Notes	Repeated freezing and thawing is not recommended. Store working aliquots at 4°C for up to one week.
Tag Info	N-terminal 6xHis-tagged
Mol. Weight	25.5kDa
Protein Description	Full Length of Mature Protein

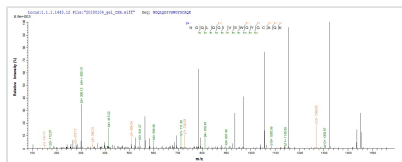
Image



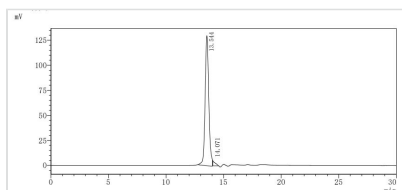
(Tris-Glycine gel) Discontinuous SDS-PAGE (reduced) with 5% enrichment gel and 15% separation gel.



Based on the SEQUEST from database of Yeast host and target protein, the LC-MS/MS Analysis result of CSB-YP018814PI could indicate that this peptide derived from Yeast-expressed Sus crofa (Pig) N/A.



Based on the SEQUEST from database of Yeast host and target protein, the LC-MS/MS Analysis result of CSB-YP018814PI could indicate that this peptide derived from Yeast-expressed Sus crofa (Pig) N/A.



The purity of Trypsin was greater than 95% as determined by SEC-HPLC

Reconstitution

We recommend that this vial be briefly centrifuged prior to opening to bring the contents to the bottom. Please reconstitute protein in deionized sterile water to a concentration of 0.1-1.0 mg/mL. We recommend to add 5-50% of glycerol (final concentration) and aliquot for long-term storage at -20°C/-80°C. Our default final concentration of glycerol is 50%. Customers could use it as reference.