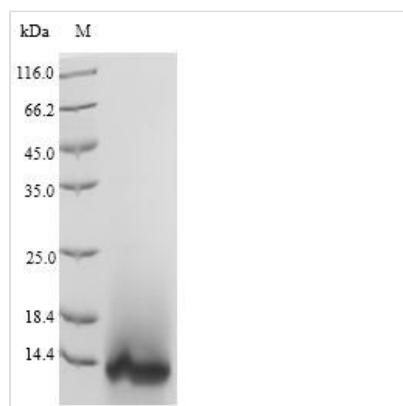




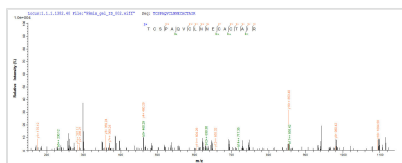
Recombinant Hirudo nipponia Guamerin

Product Code	CSB-YP342406HHK
Relevance	Inhibits mammalian elastases.
Storage	The shelf life is related to many factors, storage state, buffer ingredients, storage temperature and the stability of the protein itself. Generally, the shelf life of liquid form is 6 months at -20°C/-80°C. The shelf life of lyophilized form is 12 months at -20°C/-80°C.
Uniprot No.	P46443
Product Type	Recombinant Protein
Immunogen Species	Hirudo nipponia (Korean blood-sucking leech)
Purity	Greater than 90% as determined by SDS-PAGE.
Sequence	VDENAEDTHGLCGEKTCSPAQVCLNNECACTAIRCMIFCPNGFKVDENGCEY PCTCA
Lead Time	3-7 business days
Research Area	others
Source	Yeast
Protein Names	Recommended name: Guamerin
Expression Region	1-57aa
Notes	Repeated freezing and thawing is not recommended. Store working aliquots at 4°C for up to one week.
Tag Info	N-terminal 6xHis-tagged
Mol. Weight	8.1kDa
Protein Description	Full Length

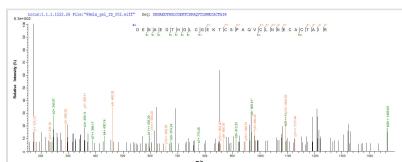
Image



(Tris-Glycine gel) Discontinuous SDS-PAGE (reduced) with 5% enrichment gel and 15% separation gel.



Based on the SEQUEST from database of Yeast host and target protein, the LC-MS/MS Analysis result of CSB-YP342406HHK could indicate that this peptide derived from Yeast-expressed *Hirudo nipponia* (Korean blood-sucking leech) Guamerin.



Based on the SEQUEST from database of Yeast host and target protein, the LC-MS/MS Analysis result of CSB-YP342406HHK could indicate that this peptide derived from Yeast-expressed *Hirudo nipponia* (Korean blood-sucking leech) Guamerin.

Reconstitution

We recommend that this vial be briefly centrifuged prior to opening to bring the contents to the bottom. Please reconstitute protein in deionized sterile water to a concentration of 0.1-1.0 mg/mL. We recommend to add 5-50% of glycerol (final concentration) and aliquot for long-term storage at -20°C/-80°C. Our default final concentration of glycerol is 50%. Customers could use it as reference.