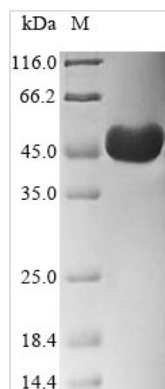




Recombinant Cricetulus griseus Actin, cytoplasmic 1 (ACTB)

Product Code	CSB-YP344170DXU
Relevance	Actins are highly conserved proteins that are involved in various types of cell motility and are ubiquitously expressed in all eukaryotic cells.
Storage	The shelf life is related to many factors, storage state, buffer ingredients, storage temperature and the stability of the protein itself. Generally, the shelf life of liquid form is 6 months at -20°C/-80°C. The shelf life of lyophilized form is 12 months at -20°C/-80°C.
Uniprot No.	P48975
Product Type	Recombinant Protein
Immunogen Species	Cricetulus griseus (Chinese hamster) (Cricetulus barabensis griseus)
Purity	Greater than 85% as determined by SDS-PAGE.
Sequence	MDDDIAALVVDNGSGMCKAGFAGDDAPRAVFPSIVGRPRHQGVMMVGMGQKD SYVGDEAQSKRGILTLKYPIEHGIVTNWDDMEKIWHHTFYNELRVAPEEHPVLL TEAPLNPKANREKMTQIMFETFNTPAMYVAIQAVLSLYASGRTTGIVMDSGDG VTHTVPIYEGYALPHAILRLDLAGRDLTDYLMKILTERGYSFTTTAEREIVRDIKE KLCYVALDFEQEMATAASSSSLEKSYELPDGQVITIGNERFRCPEALFQPSFLG MESCGIHETTFNSIMKCDVDIRKDLYANTVLSGGTTMYPGIADRMQKEITALAP STMKIKIIPPERKYSVWIGGSILASLSTFQEMWISKQEYDESGPSIVHRKCF
Lead Time	Delivery time may differ from different purchasing way or location, please kindly consult your local distributors for specific delivery time.
Research Area	Signal Transduction
Source	Yeast
Gene Names	ACTB
Protein Names	Beta-actin
Expression Region	1-375aa
Notes	Repeated freezing and thawing is not recommended. Store working aliquots at 4°C for up to one week.
Tag Info	C-terminal Myc-tagged and C-terminal 6xHis-tagged
Mol. Weight	44.7 kDa
Protein Description	Full length
Image	



(Tris-Glycine gel) Discontinuous SDS-PAGE (reduced) with 5% enrichment gel and 15% separation gel.

Reconstitution

We recommend that this vial be briefly centrifuged prior to opening to bring the contents to the bottom. Please reconstitute protein in deionized sterile water to a concentration of 0.1-1.0 mg/mL. We recommend to add 5-50% of glycerol (final concentration) and aliquot for long-term storage at -20°C/-80°C. Our default final concentration of glycerol is 50%. Customers could use it as reference.