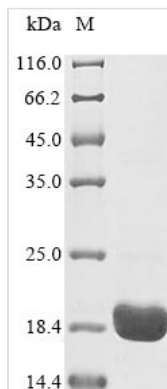




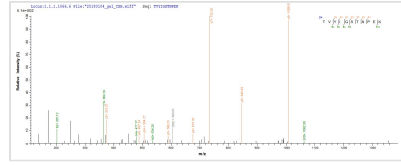
Recombinant Bovine Odorant-binding protein

Product Code	CSB-YP362133BO
Relevance	This protein binds a wide variety of chemical odorants.
Storage	The shelf life is related to many factors, storage state, buffer ingredients, storage temperature and the stability of the protein itself. Generally, the shelf life of liquid form is 6 months at -20°C/-80°C. The shelf life of lyophilized form is 12 months at -20°C/-80°C.
Uniprot No.	P07435
Product Type	Recombinant Protein
Immunogen Species	Bos taurus (Bovine)
Purity	Greater than 90% as determined by SDS-PAGE.
Sequence	AQEEAEQNLSELSGPWRTVYIGSTNPEKIQENGPFRITYFRELVFDDEKGTVD FYFSVKRDGKWKNVHVKATKQDDGTYVADYEGQNVFKIVSLSRTHLVAHNINV DKHGQTTELTELFVKLNVEDEDLEKFWKLTEDKGIDKKNVVNFLENEDHPHPE
Lead Time	Delivery time may differ from different purchasing way or location, please kindly consult your local distributors for specific delivery time.
Research Area	Others
Source	Yeast
Protein Names	Olfactory mucosa pyrazine-binding protein
Expression Region	1-159aa
Notes	Repeated freezing and thawing is not recommended. Store working aliquots at 4°C for up to one week.
Tag Info	Tag-Free
Mol. Weight	18.5 kDa
Protein Description	Full Length

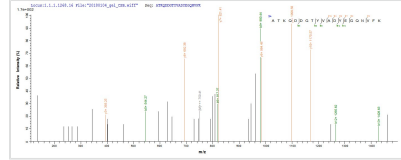
Image



(Tris-Glycine gel) Discontinuous SDS-PAGE (reduced) with 5% enrichment gel and 15% separation gel.



Based on the SEQUEST from database of Yeast host and target protein, the LC-MS/MS Analysis result of CSB-YP362133BO could indicate that this peptide derived from Yeast-expressed Bos taurus (Bovine) N/A.



Based on the SEQUEST from database of Yeast host and target protein, the LC-MS/MS Analysis result of CSB-YP362133BO could indicate that this peptide derived from Yeast-expressed Bos taurus (Bovine) N/A.

Reconstitution

We recommend that this vial be briefly centrifuged prior to opening to bring the contents to the bottom. Please reconstitute protein in deionized sterile water to a concentration of 0.1-1.0 mg/mL. We recommend to add 5-50% of glycerol (final concentration) and aliquot for long-term storage at -20°C/-80°C. Our default final concentration of glycerol is 50%. Customers could use it as reference.