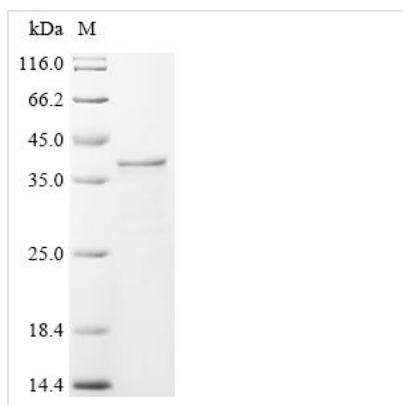




Recombinant Lactobacillus casei L-lactate dehydrogenase (ldh)

Product Code	CSB-YP365433LMH
Storage	The shelf life is related to many factors, storage state, buffer ingredients, storage temperature and the stability of the protein itself. Generally, the shelf life of liquid form is 6 months at -20°C/-80°C. The shelf life of lyophilized form is 12 months at -20°C/-80°C.
Uniprot No.	P00343
Form	Liquid or Lyophilized powder
Storage Buffer	If the delivery form is liquid, the default storage buffer is Tris/PBS-based buffer, 5%-50% glycerol. If the delivery form is lyophilized powder, the buffer before lyophilization is Tris/PBS-based buffer, 6% Trehalose.
Product Type	Recombinant Lactobacillus casei L-lactate dehydrogenase (ldh)
Immunogen Species	Lactobacillus casei
Sensitivity	Not Test
Purity	Greater than 95% as determined by SDS-PAGE.
Sequence	ASITDKDHQKVILVGDGAVGSSYAYAMVLQGIAQEIGIVDIFKDKTKGDAIDL SNALPFTSPKKIYSAEYSDAKDADLVVITAGAPQKPGETRLDLVNKNLKILKSIVDPI VDSGFNGIFLVAANPVDILTATWKLSGFPKNRVVGSGLDARFRQSIAMV NVDARSVHAYIMGEHGDTEFPVWSHANIGGVITAEWVKAHPEIKEDKLVKMF EDVRDAAYEIIKLKGATFYGIATALARISKAILNDENAVLPLSVYMDGQYGLNDIYI GTPAVINRNGIQNILEIPLTDHEEESMQKSASQLKKVLTDAFAKNDIETRQ
Lead Time	Delivery time may differ from different purchasing way or location, please kindly consult your local distributors for specific delivery time.
Research Area	Others
Source	Yeast
Gene Names	ldh
Expression Region	2-326aa
Notes	Repeated freezing and thawing is not recommended. Store working aliquots at 4? for up to one week.
Tag Info	N-terminal 6xHis-tagged
Mol. Weight	37.4 kDa
Protein Description	Full Length of Mature Protein
Image	



(Tris-Glycine gel) Discontinuous SDS-PAGE (reduced) with 5% enrichment gel and 15% separation gel.

Reconstitution

We recommend that this vial be briefly centrifuged prior to opening to bring the contents to the bottom. Please reconstitute protein in deionized sterile water to a concentration of 0.1-1.0 mg/mL. We recommend to add 5-50% of glycerol (final concentration) and aliquot for long-term storage at -20^o/-80^o. Our default final concentration of glycerol is 50%. Customers could use it as reference.