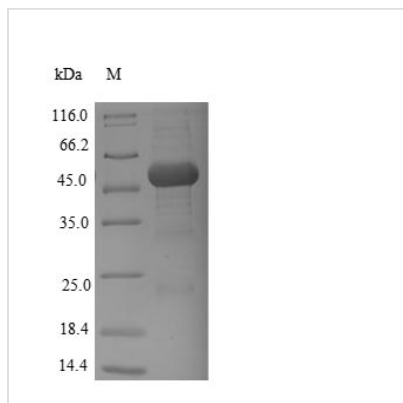




Recombinant *Bacillus subtilis* Alpha-galactosidase (melA)

Product Code	CSB-YP523525BRJ
Storage	The shelf life is related to many factors, storage state, buffer ingredients, storage temperature and the stability of the protein itself. Generally, the shelf life of liquid form is 6 months at -20°C/-80°C. The shelf life of lyophilized form is 12 months at -20°C/-80°C.
Uniprot No.	O34645
Alias	Melibiose
Product Type	Recombinant Protein
Immunogen Species	<i>Bacillus subtilis</i> (strain 168)
Purity	Greater than 90% as determined by SDS-PAGE.
Sequence	MKKITFIGAGSTIFAKNVLGDCLLTEALNGFEFALYDIDPKRLQESQLMLENLRD RYNPSVAINSYDDRKLALQNAGYVINAIQVGGYKPSTVIDFEIPKRYGLRQTIAD TVGIGGIFRSLRTIPVLFDAIKDMEEMCPDAWFLNYTNPMATLTGAMLRYTNIKT IGLCHSVQVCTKDLFKALGMEHDGIEERIAGINHMAWLLEVKKDGTDLYPEIKR RAKEKQKTKHHDMVRFELMDKFGYYVTESSEHNAEYHPYFIKRNYPELISELQI PLDEYPRRCVKQIENWEKMRDDIVNNKNLTHERSKEYGSRIIEAMETNEPFTF GGNVLNTGLITNLPSKAVVEVTCVADRKKITPCFAGELPEQLAALNRTNINTQL MTIEAAVTRKKEAVYQAAMLDPHTSAELSMKDIISMCDLFAAHGDWLPEYK
Lead Time	Delivery time may differ from different purchasing way or location, please kindly consult your local distributors for specific delivery time.
Research Area	Others
Source	Yeast
Gene Names	melA
Protein Names	Recommended name: Alpha-galactosidase EC= 3.2.1.22 Alternative name(s): Melibiose
Expression Region	1-432aa
Notes	Repeated freezing and thawing is not recommended. Store working aliquots at 4°C for up to one week.
Tag Info	N-terminal 6xHis-tagged
Mol. Weight	51.3kDa
Protein Description	Full Length
Image	



(Tris-Glycine gel) Discontinuous SDS-PAGE (reduced) with 5% enrichment gel and 15% separation gel.

Reconstitution

We recommend that this vial be briefly centrifuged prior to opening to bring the contents to the bottom. Please reconstitute protein in deionized sterile water to a concentration of 0.1-1.0 mg/mL. We recommend to add 5-50% of glycerol (final concentration) and aliquot for long-term storage at -20°C/-80°C. Our default final concentration of glycerol is 50%. Customers could use it as reference.