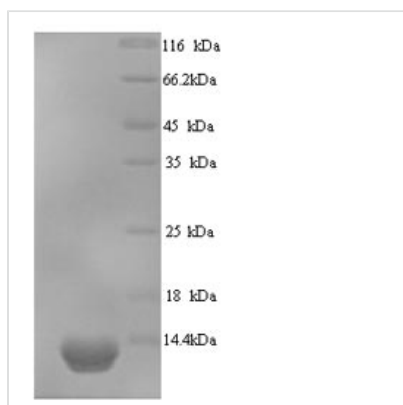




Recombinant *Saccharomyces cerevisiae* Ubiquitin-like protein SMT3 (SMT3)

Product Code	CSB-YP615489SVG
Relevance	Not known; suppressor of MIF2 mutations.
Abbreviation	SMT3
Storage	The shelf life is related to many factors, storage state, buffer ingredients, storage temperature and the stability of the protein itself. Generally, the shelf life of liquid form is 6 months at -20°C/-80°C. The shelf life of lyophilized form is 12 months at -20°C/-80°C.
Uniprot No.	Q12306
Product Type	Recombinant Protein
Immunogen Species	<i>Saccharomyces cerevisiae</i> (strain ATCC 204508 / S288c) (Baker's yeast)
Purity	Greater than 90% as determined by SDS-PAGE.
Sequence	SDSEVNQEAKPEVKPEVKPETHINLKVSDGSSEIFFKIKKTTPLRRLMEAFKR QGKEMDSLRLFLYDGIQADQTPEDLDMEDNDIIEAHREQIGG
Lead Time	3-7 business days
Research Area	Others
Source	Yeast
Gene Names	SMT3
Protein Names	Recommended name: Ubiquitin-like protein SMT3
Expression Region	2-98aa
Notes	Repeated freezing and thawing is not recommended. Store working aliquots at 4°C for up to one week.
Tag Info	N-terminal 6xHis-tagged
Mol. Weight	13.1kDa
Protein Description	Full Length of Mature Protein

Image



(Tris-Glycine gel) Discontinuous SDS-PAGE (reduced) with 5% enrichment gel and 15% separation gel.



Description

Ubiquitin-like protein SMT3 CSB-YP615489SVG is a recombinant *Saccharomyces cerevisiae* full-length of mature SMT3 protein containing amino acid residues of 2-98. It is produced in the yeast cells through Eukaryotic expression and fused with a 6xHis-tag at the N-terminus. And it has high purity of up to 90% determined by SDS-PAGE. Its predicted molecular weight is 13.1 kDa, but the actual observed molecular mass via SDS-PAGE analysis is slightly higher due to post-transcriptional modifications such as glycosylation. This recombinant SMT3 protein is in-stock, allowing for continuous sourcing and eliminating the intermediate waiting periods for protein preparation. This SMT3 protein not only acts as an immunogen for antibody production but also finds uses in the studies of microbiology.

SMT3 is the only small ubiquitin-like modifier (SUMO) protein of *Saccharomyces cerevisiae*. Like ubiquitin, SMT3 consists of multiple lysine residues that could serve as sites for synthesis of topologically and functionally distinct chains. TongLiu etc. demonstrated that SMT3 plays critical roles in the asexual development, environmental adaptation, and pathogenicity of *Beauveria bassiana*.

Reconstitution

We recommend that this vial be briefly centrifuged prior to opening to bring the contents to the bottom. Please reconstitute protein in deionized sterile water to a concentration of 0.1-1.0 mg/mL. We recommend to add 5-50% of glycerol (final concentration) and aliquot for long-term storage at -20°C/-80°C. Our default final concentration of glycerol is 50%. Customers could use it as reference.