

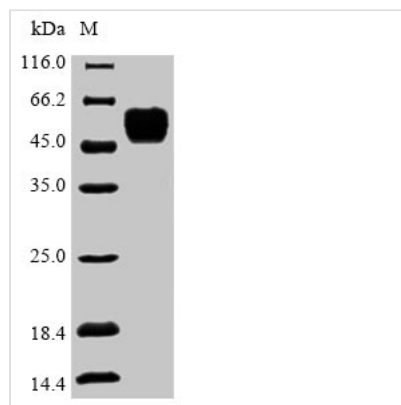


Recombinant Danio rerio COP9 signalosome complex subunit 2 (cops2)

Product Code	CSB-YP753713DIL
Relevance	Essential component of the COP9 signalosome complex (CSN), a complex involved in various cellular and developmental processes. The CSN complex is an essential regulator of the ubiquitin (Ubl) conjugation pathway by mediating the deneddylation of the cullin subunits of E3 ligase complexes, leading to modify the Ubl ligase activity.
Abbreviation	cops2
Storage	The shelf life is related to many factors, storage state, buffer ingredients, storage temperature and the stability of the protein itself. Generally, the shelf life of liquid form is 6 months at -20°C/-80°C. The shelf life of lyophilized form is 12 months at -20°C/-80°C.
Uniprot No.	Q6IQT4
Product Type	Recombinant Protein
Immunogen Species	Danio rerio (Zebrafish) (Brachydanio rerio)
Purity	Greater than 90% as determined by SDS-PAGE.
Sequence	MSDMEDDFMCDDEEDYDLEYSEDSNSEPNVDLENQYYNSKALKEDDPKAAL SSFQKVLELEGEKGEWGFKALKQMIKINFKLTNFPMMNRYKQLLTYIRSAVTR NYSEKSINSILDYISTSKQMDLLQEFYETTLEALKDAKNDRLWFKTNTKLGKLYL EREEFGKLQKILRQLHQSCQTDDGEDDLKKGQTLLIYALEIQMYTAQKNNKKL KALYEQSLHIKSAIPHPLIMGVIRECGGKMHLREGEFEKAHTDFFEAFKNYDES GSPRRTTCLKYLVLANMLMKSGINPFDSQEAKPYKNDPEILAMTNLVSAYQNN DITEFEKILKTNHSNIMDDPFIREHIEELLRNIRTQVLIKLIKPYTRIHIPFISKELNID VADVESLLVQCILDNTINGRIDQVNQLELDHQKRGGARYTALDKWTNQLNSL NQAIVSKLA
Lead Time	3-7 business days
Research Area	Signal Transduction
Source	Yeast
Gene Names	cops2
Protein Names	csn2
Expression Region	1-443aa
Notes	Repeated freezing and thawing is not recommended. Store working aliquots at 4°C for up to one week.
Tag Info	N-terminal 6xHis-tagged
Mol. Weight	53.6kDa
Protein Description	Full Length



Image



(Tris-Glycine gel) Discontinuous SDS-PAGE (reduced) with 5% enrichment gel and 15% separation gel.

Reconstitution

We recommend that this vial be briefly centrifuged prior to opening to bring the contents to the bottom. Please reconstitute protein in deionized sterile water to a concentration of 0.1-1.0 mg/mL. We recommend to add 5-50% of glycerol (final concentration) and aliquot for long-term storage at -20°C/-80°C. Our default final concentration of glycerol is 50%. Customers could use it as reference.