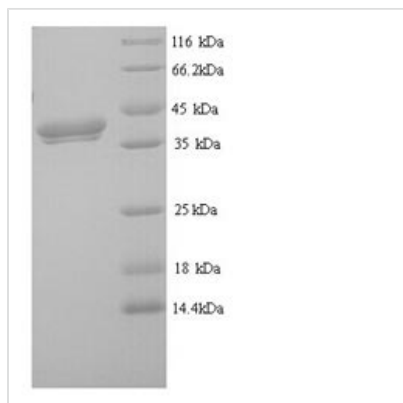




Recombinant Mouse Erythroferrone (Erfe)

Product Code	CSB-YP757647MO
Relevance	Iron-regulatory hormone that acts as an erythroid regulator after hemorrhage: produced by erythroblasts following blood loss and mediates suppression of hepcidin (HAMP) expression in the liver, thereby promoting increased iron absorption and mobilization from stores (PubMed:24880340). Promotes lipid uptake into adipocytes and hepatocytes via transcriptional up-regulation of genes involved in fatty acid uptake
Abbreviation	Erfe
Storage	The shelf life is related to many factors, storage state, buffer ingredients, storage temperature and the stability of the protein itself. Generally, the shelf life of liquid form is 6 months at -20°C/-80°C. The shelf life of lyophilized form is 12 months at -20°C/-80°C.
Uniprot No.	Q6PGN1
Alias	Complement C1q tumor necrosis factor-related protein 15 Myonectin
Product Type	Recombinant Protein
Immunogen Species	Mus musculus (Mouse)
Purity	Greater than 90% as determined by SDS-PAGE.
Sequence	LGVPESAEPVGTHARPQPPGAELPAPPANSPPEPTIAHAHSVDPRDAWMLFV KQSDKGINSKRRSKARRLKLGLPGPPGPPGPQGPPGPFIPSEVLLKEFQLLLK GAVRQRESHLEHCTRDLTTPASGSPSRVPAQAQELDSQDPGALLALLAATLAQ GPRAPRVEAAFHCRLLRRDVQVDRRALHELGIYYLPEVEGAFHRGPGLNLTSG QYTAPVAGFYALAATLHVALTEQPRKGPTRPRDRLRLLCIQSLCQHNASLETV MGLENSSELFTISVNGVLYLQAGHYTSVFLDNASGSSLTVRSGSHFSAILLGL
Lead Time	3-7 business days
Research Area	Others
Source	Yeast
Gene Names	Erfe
Protein Names	Recommended name: Erythroferrone Alternative name(s): Complement C1q tumor necrosis factor-related protein 15 Myonectin
Expression Region	25-340aa
Notes	Repeated freezing and thawing is not recommended. Store working aliquots at 4°C for up to one week.
Tag Info	N-terminal 6xHis-tagged
Mol. Weight	35.9kDa
Protein Description	Full Length of Mature Protein
Image	



(Tris-Glycine gel) Discontinuous SDS-PAGE (reduced) with 5% enrichment gel and 15% separation gel.

Description

Recombinant Mouse Erythroferrone(Erfe) is a partial length protein expressed with N-terminal 6xHis-tagged in the yeast. Its expression region corresponds to 25-340aa of mouse Erfe protein. Its purity was determined by SDS-PAGE and reached up to 90% and presented a molecular mass band of 35.9 kDa on the gel. This recombinant Erfe protein may be used to synthesize antibodies against Erfe or on the studies of Erfe-associated signal transduction.

Erfe is iron-regulatory hormone that acts as an erythroid regulator after hemorrhage. This protein is produced by erythroblasts following blood loss and mediates suppression of hepcidin (HAMP) expression in the liver, thereby promoting increased iron absorption and mobilization from stores. It promotes lipid uptake into adipocytes and hepatocytes via transcriptional up-regulation of genes involved in fatty acid uptake.

Reconstitution

We recommend that this vial be briefly centrifuged prior to opening to bring the contents to the bottom. Please reconstitute protein in deionized sterile water to a concentration of 0.1-1.0 mg/mL. We recommend to add 5-50% of glycerol (final concentration) and aliquot for long-term storage at -20°C/-80°C. Our default final concentration of glycerol is 50%. Customers could use it as reference.