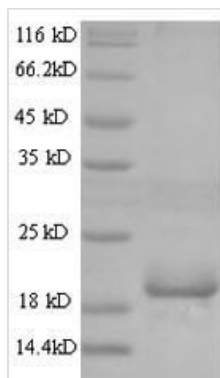




Recombinant Mouse Angiopoietin-like protein 8 (Angptl8)

Product Code	CSB-YP844436MO
Relevance	Hormone that acts as a blood lipid regulator by regulating serum triglyceride levels . May be involved in the metabolic transition between fasting and refeeding: required to direct fatty acids to adipose tissue for storage in the fed state . According to a report, may act by promoting ANGPTL3 cleavage . According to another study, not required for cleavage of ANGPTL3 .
Abbreviation	Gm6484
Storage	The shelf life is related to many factors, storage state, buffer ingredients, storage temperature and the stability of the protein itself. Generally, the shelf life of liquid form is 6 months at -20°C/-80°C. The shelf life of lyophilized form is 12 months at -20°C/-80°C.
Uniprot No.	Q8R1L8
Alias	Betatrophin1
Product Type	Recombinant Protein
Immunogen Species	Mus musculus (Mouse)
Purity	Greater than 90% as determined by SDS-PAGE.
Sequence	VRPAPVAPLGGPEPAQYEELTLLFHGALQLGQALNGVYRATEARL TEAGHSLG LYDRALEFLGTEVRQGQDATQELRTSLSEIQVEEDALHLRAEATARSLGEVAR AQQALRDTVRRQLQVQLRGAWLGQAHQEFETLKARADKQSHLLWALTGHVQR QQREMAEQQQWLRQIQQLHTAALPA
Lead Time	3-7 business days
Research Area	Others
Source	Yeast
Gene Names	Gm6484
Protein Names	Recommended name: Hepatocellular carcinoma-associated protein TD26 homolog
Expression Region	16-198aa
Notes	Repeated freezing and thawing is not recommended. Store working aliquots at 4°C for up to one week.
Tag Info	N-terminal 6xHis-tagged
Mol. Weight	22.5kDa
Protein Description	Full Length of Mature Protein
Image	



(Tris-Glycine gel) Discontinuous SDS-PAGE (reduced) with 5% enrichment gel and 15% separation gel.

Reconstitution

We recommend that this vial be briefly centrifuged prior to opening to bring the contents to the bottom. Please reconstitute protein in deionized sterile water to a concentration of 0.1-1.0 mg/mL. We recommend to add 5-50% of glycerol (final concentration) and aliquot for long-term storage at -20°C/-80°C. Our default final concentration of glycerol is 50%. Customers could use it as reference.