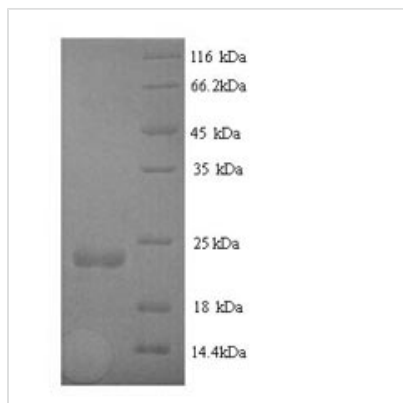




Recombinant Staphylococcus aureus Staphopain B (sspB)

Product Code	CSB-YP859203SKX
Relevance	Cysteine protease able to degrade elastin, fibrogen, fibronectin and kininogen. Exhibits a strong preference for substrates where arginine is preceded by a hydrophobic amino acid. Promotes detachment of primary human keratinocytes. Along with other extracellular proteases is involved in colonization and infection of human tissues
Abbreviation	sspB
Storage	The shelf life is related to many factors, storage state, buffer ingredients, storage temperature and the stability of the protein itself. Generally, the shelf life of liquid form is 6 months at -20°C/-80°C. The shelf life of lyophilized form is 12 months at -20°C/-80°C.
Uniprot No.	Q99V46
Alias	Staphylococcal cysteine proteinase B Staphylopain B
Product Type	Recombinant Protein
Immunogen Species	Staphylococcus aureus (strain Mu50 / ATCC 700699)
Purity	Greater than 90% as determined by SDS-PAGE.
Sequence	DQVQYENTLKNFKIREQQFDNSWCAGFSMAALLNATKNTDTYNAHDIMRTLYPEVSEQDLPCSTFPNQMIIEYGKSQGRDIHYQEGVPSYEQVDQLTKDNVIGIMILAQSVSQNPNDPHLGHALAVVGNKINDQEKLIYWNPWDTLSIQDADSSLLHLSFNRDYNWYGSMIGY
Lead Time	Delivery time may differ from different purchasing way or location, please kindly consult your local distributors for specific delivery time.
Research Area	Others
Source	Yeast
Gene Names	sspB
Protein Names	Recommended name: Staphopain B EC= 3.4.22.-Alternative name(s): Staphylococcal cysteine proteinase B Staphylopain B
Expression Region	220-393aa
Notes	Repeated freezing and thawing is not recommended. Store working aliquots at 4°C for up to one week.
Tag Info	N-terminal 6xHis-tagged
Mol. Weight	21.9kDa
Protein Description	Full Length of Mature Protein
Image	



(Tris-Glycine gel) Discontinuous SDS-PAGE (reduced) with 5% enrichment gel and 15% separation gel.

Reconstitution

We recommend that this vial be briefly centrifuged prior to opening to bring the contents to the bottom. Please reconstitute protein in deionized sterile water to a concentration of 0.1-1.0 mg/mL. We recommend to add 5-50% of glycerol (final concentration) and aliquot for long-term storage at -20°C/-80°C. Our default final concentration of glycerol is 50%. Customers could use it as reference.