

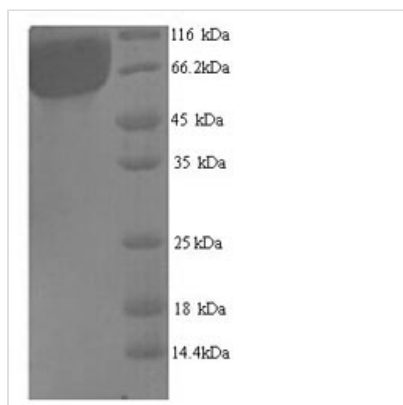


Recombinant Arabidopsis thaliana Trihelix transcription factor GT-1 (GT-1)

Product Code	CSB-YP861892DOA
Relevance	Probable transcription factor that binds specifically to the core DNA sequence 5'-GGTTAA-3'. May act as a molecular switch in response to light signals.
Abbreviation	GT-1
Storage	The shelf life is related to many factors, storage state, buffer ingredients, storage temperature and the stability of the protein itself. Generally, the shelf life of liquid form is 6 months at -20°C/-80°C. The shelf life of lyophilized form is 12 months at -20°C/-80°C.
Uniprot No.	Q9FX53
Alias	Trihelix DNA-binding protein GT-1
Product Type	Recombinant Protein
Immunogen Species	Arabidopsis thaliana (Mouse-ear cress)
Purity	Greater than 90% as determined by SDS-PAGE.
Sequence	MFISDKSRPTDFYKDDHHNSSTTSTTRDMMIDVLTTTNEVDLQSHHHHHNHHN HHLHQSQPQQQILLGESSGEDHEVKAPKKRAETWVQDETRSLIMFRRGMDGL FNTSKSNKHLWEQISSKMREKGFDRSPTMCTDKWRNLLKEFKKAKHHDRGN GSAKMSYYKEIEDILRERSKKVTPPQYNKSPNTPPTS AKVDSFMQFTDKGFDD TSISFGSVEANGRPALNLERRLDHGHPLAITTA VDAVAANGVTPWNWRETP GNGDDSHGQPFGGRVITVKFGDYTRRIGVDGSAEAIKEVIRSAFGLRTRRAFW LEDEDQIIRCLDRDMLGNLYLLRLDDGLAIRVCHYDESNQLP VHSEEKIFYTEE DYREFLARQGWSSLQVDGFRNIENMDDLQPGAVYRGVR
Lead Time	Delivery time may differ from different purchasing way or location, please kindly consult your local distributors for specific delivery time.
Research Area	Others
Source	Yeast
Gene Names	GT-1
Protein Names	Recommended name: Trihelix transcription factor GT-1 Alternative name(s): Trihelix DNA-binding protein GT-1
Expression Region	1-406aa
Notes	Repeated freezing and thawing is not recommended. Store working aliquots at 4°C for up to one week.
Tag Info	N-terminal 6xHis-tagged
Mol. Weight	48.7kDa
Protein Description	Full Length



Image



(Tris-Glycine gel) Discontinuous SDS-PAGE (reduced) with 5% enrichment gel and 15% separation gel.

Reconstitution

We recommend that this vial be briefly centrifuged prior to opening to bring the contents to the bottom. Please reconstitute protein in deionized sterile water to a concentration of 0.1-1.0 mg/mL. We recommend to add 5-50% of glycerol (final concentration) and aliquot for long-term storage at -20°C/-80°C. Our default final concentration of glycerol is 50%. Customers could use it as reference.