

# Dkk-1 rabbit pAb

Cat No.:ES4292

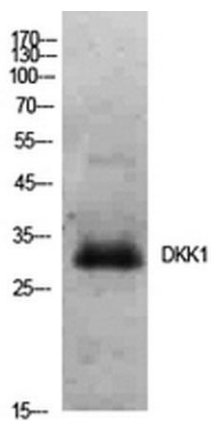
For research use only

## Overview

Product Name	Dkk-1 rabbit pAb
Host species	Rabbit
Applications	WB;IHC;IF;ELISA
Species Cross-Reactivity	Human;Mouse;Rat
Recommended dilutions	Western Blot: 1/500 - 1/2000. IHC-p: 1:100-1:300. ELISA: 1/10000. Not yet tested in other applications.
Immunogen	The antiserum was produced against synthesized peptide derived from the C-terminal region of human DKK1. AA range:181-230
Specificity	Dkk-1 Polyclonal Antibody detects endogenous levels of Dkk-1 protein.
Formulation	Liquid in PBS containing 50% glycerol, 0.5% BSA and 0.02% sodium azide.
Storage	Store at -20°C. Avoid repeated freeze-thaw cycles.
Protein Name	Dickkopf-related protein 1
Gene Name	DKK1
Cellular localization	Secreted.
Purification	The antibody was affinity-purified from rabbit antiserum by affinity-chromatography using epitope-specific immunogen.
Clonality	Polyclonal
Concentration	1 mg/ml
Observed band	29kD
Human Gene ID	22943
Human Swiss-Prot Number	O94907
Alternative Names	DKK1; Dickkopf-related protein 1; Dickkopf-1; Dkk-1; hDkk-1; SK
Background	This gene encodes a protein that is a member of the dickkopf family. It is a secreted protein with two cysteine rich regions and is involved in embryonic development through its inhibition of the WNT signaling pathway. Elevated levels of DKK1 in bone marrow plasma and peripheral blood is associated



with the presence of osteolytic bone lesions in patients with multiple myeloma. [provided by RefSeq, Jul 2008],



Western Blot analysis of Hela cells using Dkk-1 Polyclonal Antibody. Secondary antibody(catalog#:RS0002) was diluted at 1:20000

Immunohistochemical analysis of paraffin-embedded human-brain, antibody was diluted at 1:100

