



TACC1 rabbit pAb

Cat No.:ES7329

For research use only

Overview

Product Name	TACC1 rabbit pAb
Host species	Rabbit
Applications	WB;IHC;IF;ELISA
Species Cross-Reactivity	Human;Mouse
Recommended dilutions	Western Blot: 1/500 - 1/2000. Immunohistochemistry: 1/100 - 1/300. Immunofluorescence: 1/200 - 1/1000. ELISA: 1/10000. Not yet tested in other applications.
Immunogen	The antiserum was produced against synthesized peptide derived from human TACC1. AA range:11-60
Specificity	TACC1 Polyclonal Antibody detects endogenous levels of TACC1 protein.
Formulation	Liquid in PBS containing 50% glycerol, 0.5% BSA and 0.02% sodium azide.
Storage	Store at -20°C. Avoid repeated freeze-thaw cycles.
Protein Name	Transforming acidic coiled-coil-containing protein 1
Gene Name	TACC1
Cellular localization	Cytoplasm . Nucleus . Cytoplasm, cytoskeleton, microtubule organizing center, centrosome . Midbody . Nucleus during interphase. Weakly concentrated at centrosomes during mitosis and colocalizes with AURKC at the midbody during cytokinesis. .; [Isoform 5]: Membrane ; Lipid-anchor .; [Isoform 10]: Cytoplasm .
Purification	The antibody was affinity-purified from rabbit antiserum by affinity-chromatography using epitope-specific immunogen.
Clonality	Polyclonal
Concentration	1 mg/ml
Observed band	87kD
Human Gene ID	6867
Human Swiss-Prot Number	O75410
Alternative Names	TACC1; KIAA1103; Transforming acidic



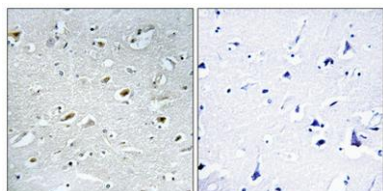


Background

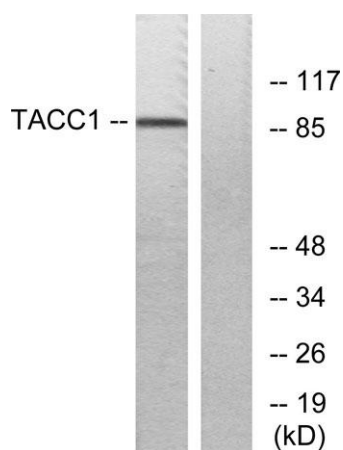
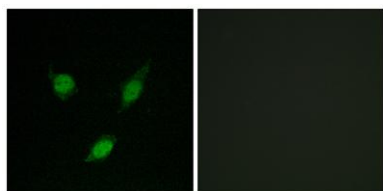
coiled-coil-containing protein 1; Gastric cancer antigen Ga55; Taxin-1

This locus may represent a breast cancer candidate gene. It is located close to FGFR1 on a region of chromosome 8 that is amplified in some breast cancers. Three transcript variants encoding different isoforms have been found for this gene. [provided by RefSeq, Apr 2009],

Immunohistochemical analysis of paraffin-embedded Human brain. Antibody was diluted at 1:100(4° overnight). High-pressure and temperature Tris-EDTA,pH8.0 was used for antigen retrieval. Negative contrl (right) obtained from antibody was pre-absorbed by i



Immunofluorescence analysis of MCF7 cells, using TACC1 Antibody. The picture on the right is blocked with the synthesized peptide.

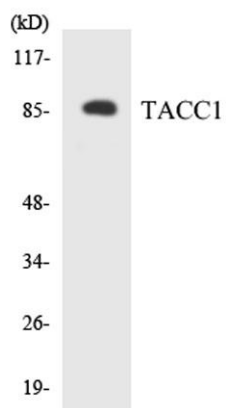


Western blot analysis of lysates from K562 cells, using TACC1 Antibody. The lane on the right is blocked with the synthesized peptide.





ELK Biotechnology



Western blot analysis of the lysates from HeLa cells using TACC1 antibody.



+86-27-59760950

ELKbio@ELKbiotech.com

www.elkbiotech.com

23-2, No.388 Gaoxin 2nd Road,Wuhan East Lake Hi-tech Development Zone, Hubei , P.R.C