



# CPI-17 rabbit pAb

Cat No.:ES8044

For research use only

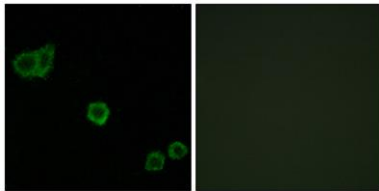
## Overview

Product Name	CPI-17 rabbit pAb
Host species	Rabbit
Applications	WB;IHC;IF;ELISA
Species Cross-Reactivity	Human;Mouse;Rat
Recommended dilutions	Western Blot: 1/500 - 1/2000. Immunohistochemistry: 1/100 - 1/300. Immunofluorescence: 1/200 - 1/1000. ELISA: 1/20000. Not yet tested in other applications.
Immunogen	The antiserum was produced against synthesized peptide derived from human CPI17 alpha. AA range:5-54
Specificity	CPI-17 Polyclonal Antibody detects endogenous levels of CPI-17 protein.
Formulation	Liquid in PBS containing 50% glycerol, 0.5% BSA and 0.02% sodium azide.
Storage	Store at -20°C. Avoid repeated freeze-thaw cycles.
Protein Name	Protein phosphatase 1 regulatory subunit 14A
Gene Name	PPP1R14A
Cellular localization	Cytoplasm .
Purification	The antibody was affinity-purified from rabbit antiserum by affinity-chromatography using epitope-specific immunogen.
Clonality	Polyclonal
Concentration	1 mg/ml
Observed band	22kD
Human Gene ID	94274
Human Swiss-Prot Number	Q96A00
Alternative Names	PPP1R14A; CPI17; PPP1INL; Protein phosphatase 1 regulatory subunit 14A; 17 kDa PKC-potentiated inhibitory protein of PP1; Protein kinase C-potentiated inhibitor protein of 17 kDa; CPI-17
Background	The protein encoded by this gene belongs to the protein phosphatase 1 (PP1) inhibitor family. This

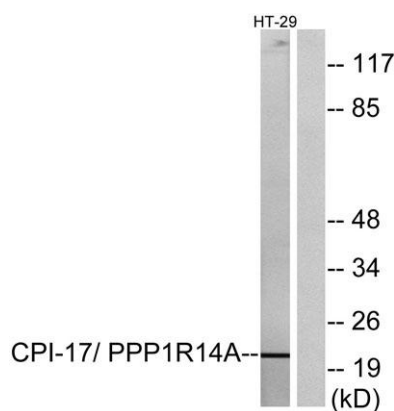
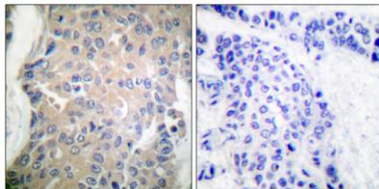


protein is an inhibitor of smooth muscle myosin phosphatase, and has higher inhibitory activity when phosphorylated. Inhibition of myosin phosphatase leads to increased myosin phosphorylation and enhanced smooth muscle contraction. Alternatively spliced transcript variants encoding different isoforms have been noted for this gene. [provided by RefSeq, Sep 2011],

Immunofluorescence analysis of HeLa cells, using CPI17 alpha Antibody. The picture on the right is blocked with the synthesized peptide.



Immunohistochemistry analysis of paraffin-embedded human breast carcinoma tissue, using CPI17 alpha Antibody. The picture on the right is blocked with the synthesized peptide.



Western blot analysis of lysates from HT-29 cells, using CPI17 alpha Antibody. The lane on the right is blocked with the synthesized peptide.

