



Cytokeratin 14/17 rabbit pAb

Cat No.:ES8537

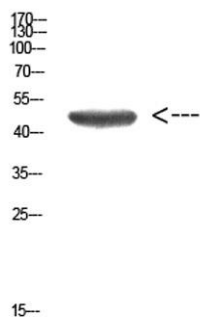
For research use only

Overview

Product Name	Cytokeratin 14/17 rabbit pAb
Host species	Rabbit
Applications	WB;ELISA
Species Cross-Reactivity	Human;Mouse;Rat
Recommended dilutions	WB 1:500-2000, ELISA 1:10000-20000
Immunogen	Synthetic peptide from human protein at AA range: 261-310
Specificity	The antibody detects endogenous Cytokeratin 14/17 protein
Formulation	Liquid in PBS containing 50% glycerol, 0.5% BSA and 0.02% sodium azide.
Storage	Store at -20°C. Avoid repeated freeze-thaw cycles.
Protein Name	keratin 14, keratin 17
Gene Name	KRT14/17
Cellular localization	Cytoplasm. Nucleus. Expressed in both as a filamentous pattern.
Purification	The antibody was affinity-purified from rabbit antiserum by affinity-chromatography using epitope-specific immunogen.
Clonality	Polyclonal
Concentration	1 mg/ml
Observed band	52kD
Human Gene ID	3861
Human Swiss-Prot Number	P02533/Q04695
Alternative Names	KRT14
Background	This gene encodes a member of the keratin family, the most diverse group of intermediate filaments. This gene product, a type I keratin, is usually found as a heterotetramer with two keratin 5 molecules, a type II keratin. Together they form the cytoskeleton of epithelial cells. Mutations in the genes for these keratins are associated with epidermolysis bullosa simplex. At least one pseudogene has been

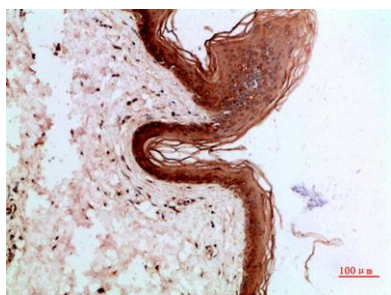


identified at 17p12-p11. [provided by RefSeq, Jul 2008],



Western Blot analysis of HEPG2 cells using Antibody diluted at 1000. Secondary antibody(catalog#:RS0002) was diluted at 1:20000

Immunohistochemical analysis of paraffin-embedded human-skin, antibody was diluted at 1:200



Immunohistochemical analysis of paraffin-embedded human-skin, antibody was diluted at 1:200

