



# Pan myristoylation rabbit pAb

Cat No.:ES8552

For research use only

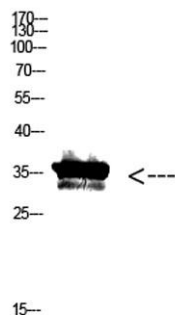
## Overview

Product Name	Pan myristoylation rabbit pAb
Host species	Rabbit
Applications	WB;ELISA
Species Cross-Reactivity	Species independent
Recommended dilutions	WB 1:500-2000, ELISA 1:10000-20000
Immunogen	Synthetic myristoylated peptide
Specificity	The antibody detects endogenous Lysine myristoylated protein
Formulation	Liquid in PBS containing 50% glycerol, 0.5% BSA and 0.02% sodium azide.
Storage	Store at -20°C. Avoid repeated freeze-thaw cycles.
Protein Name	
Gene Name	
Cellular localization	
Purification	The antibody was affinity-purified from rabbit antiserum by affinity-chromatography using epitope-specific immunogen.
Clonality	Polyclonal
Concentration	1 mg/ml
Observed band	130 80 35kD
Human Gene ID	
Human Swiss-Prot Number	
Alternative Names	
Background	





**ELK Biotechnology**



Western Blot analysis of KB cells using Antibody diluted at 500. Secondary antibody(catalog#:RS0002) was diluted at 1:20000



+86-27-59760950

[ELKbio@ELKbiotech.com](mailto:ELKbio@ELKbiotech.com)

[www.elkbiotech.com](http://www.elkbiotech.com)

23-2, No.388 Gaoxin 2nd Road,Wuhan East Lake Hi-tech Development Zone, Hubei , P.R.C