

Recombinant Human EphB6 Protein

Catalog Number: PKSH031773

Note: Centrifuge before opening to ensure complete recovery of vial contents.

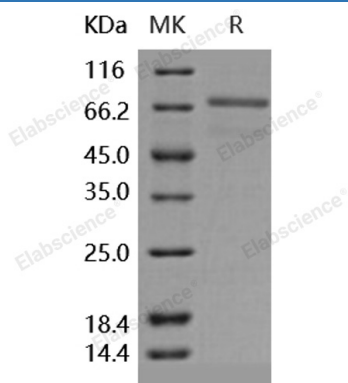
Description

Species	Human
Mol_Mass	60.4 kDa
Accession	NP_004436.1
Bio-activity	Immobilized human EphB6 at 10 µg/mL (100 µl/well) can bind biotinylated human EFNB2-Fch with a linear range of 1. 56-50 ng/mL.

Properties

Purity	> 95 % as determined by reducing SDS-PAGE.
Endotoxin	< 1.0 EU per µg of the protein as determined by the LAL method.
Storage	Generally, lyophilized proteins are stable for up to 12 months when stored at -20 to -80 °C. Reconstituted protein solution can be stored at 4-8°C for 2-7 days. Aliquots of reconstituted samples are stable at < -20°C for 3 months.
Shipping	This product is provided as lyophilized powder which is shipped with ice packs.
Formulation	Lyophilized from sterile 100mM NaCl, 50mM Tris, pH 7.5 Normally 5% - 8% trehalose, mannitol and 0.01% Tween 80 are added as protectants before lyophilization.
Reconstitution	Please refer to the specific buffer information in the printed manual. Please refer to the printed manual for detailed information.

Data



> 95 % as determined by reducing SDS-PAGE.

Background

For Research Use Only

Toll-free: 1-888-852-8623
Web: www.elabscience.com

Tel: 1-832-243-6086
Email: techsupport@elabscience.com

Fax: 1-832-243-6017

Rev. V3.3

Ephrins are divided into the ephrin-A (EFNA) class and the ephrin-B (EFNB) class based on their structures and sequence relationships. Ephrin receptors make up the largest subgroup of the receptor tyrosine kinase (RTK) family. EphB6 is an unusual Eph receptor; lacking catalytic capacity due to alterations in its kinase domain. Interestingly; increased metastatic activity is associated with reduced EphB6 receptor expression in several tumor types; including breast cancer. This emphasizes the potential of EphB6 to act as a suppressor of cancer aggressiveness. EphB6 suppress cancer invasiveness through c-Cbl-dependent signaling; morphologic changes; and cell attachment and indicate that EphB6 may represent a useful prognostic marker and a promising target for therapeutic approaches. EphB6 can both positively and negatively regulate cell adhesion and migration; and suggest that tyrosine phosphorylation of the receptor by an Src family kinase acts as the molecular switch for the functional transition. In addition; Ephrin-B2 may be a physiological ligand for the EphB6 receptor.

For Research Use Only

Toll-free: 1-888-852-8623
Web: www.elabscience.com

Tel: 1-832-243-6086
Email: techsupport@elabscience.com

Fax: 1-832-243-6017